



# 中国智能汽车指数测评结果

China Intelligent Vehicle Index Rating Results

## (2023年第五批)

(Batch 5 in 2023)

中国 · 重庆

Chongqing · China

2024年3月

3,2024



## 别克 世纪 2023款

### 六座蕴世版



车辆类型  
Vehicle Type

多用途乘用车

整车型号  
Vehicle Model

SGM6523UBA3

生产厂家  
Manufacturer

上汽通用汽车有限公司

制造年月  
Manufacture Date

2023-11

能源类型  
Energy Type

汽油

系统版本  
System Version

458-20230831-RQB23C-308-Signed

车辆识别代号  
VIN

LSGUP8AL2PA120458

### 环境感知传感器

Environment Perception Sensor

传感器类型  
Sensor Type

数量  
Qty

摄像头  
Camera

5

激光雷达  
Laser Radar

0

毫米波雷达  
Millimeter-Wave Radar

5

超声波雷达  
Ultrasonic-Wave Radar

12



## 别克 世纪 2023款

### 六座蕴世版



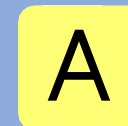
> 智能行车  
Intelligent Driving



> 智能安全  
Intelligent Safety



> 智能泊车  
Intelligent Parking



> 智能交互  
Intelligent Interaction



> 智能能效  
Intelligent Energy Efficiency



—

G 优秀    A 良好    M 一般    P 较差  
G Good    A Acceptable    M Marginal    P Poor



别克 世纪 2023款  
六座蕴世版

单车道纵向  
控制能力

Single-Lane Longitudinal  
Control Capability

20分 (满分22.5分)

20 points (out of 22.5 points)

单车道横向  
控制能力

Single-Lane Lateral  
Control Capability

1分 (满分1分)

1 point (out of 1 point)

单车道纵横  
向控制能力

Single-Lane Combined  
Longitudinal and Lateral

3分 (满分4分)

3 points (out of 4 points)

换道辅助能力

Lane-Change Assistance  
Capability

1.5分 (满分1.5分)

1.5 points (out of 1.5 points)

关联功能

Correlation Function

0.5分 (满分2分)

0.5 points (out of 2 points)

用户手册审查

Review of User Manual

1分 (满分1分)

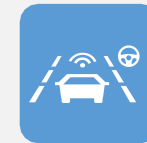
1 point (out of 1 point)

智能行车总得分

Total Score of Intelligent Driving

27分/84%

27 points/84%



G 优秀    A 良好    M 一般    P 较差  
G Good    A Acceptable    M Marginal    P Poor

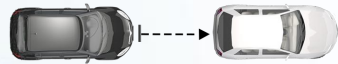


别克 世纪 2023款  
六座蕴世版

智能行车  
Intelligent Driving

单车道纵向控制能力  
Single-Lane Longitudinal Control Capability

(满分22.5分) (out of 22.5 points)  
得分: 20分 Score: 20 points



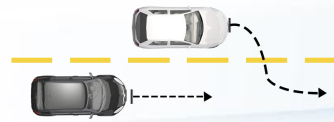
目标车静止  
Stationary - Target Vehicle  
(满分6分) (out of 6 points)  
得分: 6分 Score:6 points



目标车低速  
Low Speed - Target Vehicle  
(满分9分) (out of 9 points)  
得分: 7.5分 Score:7.5 points



目标车减速  
Deceleration - Target Vehicle  
(满分3分) (out of 3 points)  
得分: 2分 Score:2 points



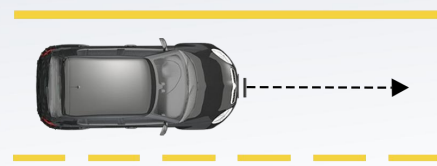
前车切入  
Forward Vehicle Cutting in  
(满分4.5分) (out of 4.5 points)  
得分: 4.5分 Score:4.5 points



别克 世纪 2023款  
六座蕴世版

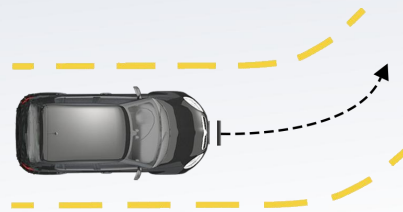
智能行车  
Intelligent Driving

单车道横向控制能力 (满分1分)  
Single-Lane Lateral Control Capability (out of 1 point)  
得分: 1分  
Score:1 point



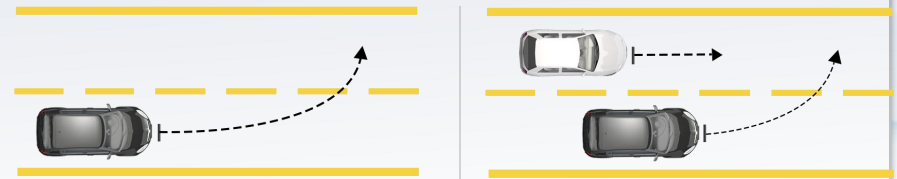
车道居中行驶 (满分1分)  
Lane Center Driving (out of 1 point)  
得分: 1分 Score:1 point

单车道纵横向控制能力 (满分4分)  
Single-Lane Combined Longitudinal and Lateral Control Capability (out of 4 points)  
得分: 3分  
Score:3 points



直道驶入弯道 (满分4分)  
Straight to Curve (out of 4 points)  
得分: 3分 Score:3 points

换道辅助能力 (满分1.5分)  
Lane-Change Assistance Capacity (out of 1.5 points)  
得分: 1.5分  
Score:1.5 points



盲区无车 (满分0.5分)  
No Vehicle in Blind Spots (out of 0.5 points)  
得分: 0.5分 Score:0.5 points

盲区有车 (满分1分)  
Vehicles in Blind Spots (out of 1 point)  
得分: 1分 Score:1 point



## 别克 世纪 2023款 六座蕴世版

## 智能行车 Intelligent Driving

关联功能 (满分2分) Correlation Function (out of 2 points)		得分: 0.5分 Score:0.5 points
抬头显示 Head up Display	●	0.5/0.5分(0.5 points)
驾驶员监控 Driver Monitoring	—	0/1分(0 points)
蜂窝车联网 Cellular Internet of Vehicle	—	0/0.5分(0 points)

搭载 Configured ●    需选装 Optional ○    未明确 Undefined —

用户手册审查 (满分1分) Review of User Manual (out of 1 point)		得分: 1分 Score:1 point
系统定义 System Definition	●	0.25/0.25分(0.25 points)
驾驶员责任 Driver Responsibility	●	0.25/0.25分(0.25 points)
系统使用条件 System Service Condition	●	0.25/0.25分(0.25 points)
系统局限性 System Limitation	●	0.25/0.25分(0.25 points)

明确 Defined ●    未明确 Undefined —



## 别克 世纪 2023款

### 六座蕴世版

#### 车对车自动紧急制动系统

AEB C2C System

20分 (满分22分)

20 points (out of 22 points)

#### 行人与骑行者自动紧急制动系统

AEB VRU System

56分 (满分56分)

56 points (out of 56 points)

#### 车道辅助系统

Lane Keeping Assist System

14分 (满分14分)

14 points (out of 14 points)

#### 侧向辅助系统

Blind Spot Detection

13.5分 (满分15分)

13.5 points (out of 15 points)

### 智能安全总得分

Total Score of Intelligent Safety

103.5分/97%

103.5 points/97%



G 优秀    A 良好    M 一般    P 较差  
G Good    A Acceptable    M Marginal    P Poor





## 别克 世纪 2023款

### 六座蕴世版

## 智能安全

Intelligent Safety



### 车对车自动紧急制动系统 AEB C2C System

(满分22分) (out of 22 points)

得分: 20(19+1)分 Score:20(19+1) points

### FCW功能 (满分3分)

FCW Function (out of 3 points)

得分: 2分

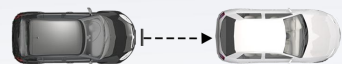
Score:2 points

### AEB功能 (满分16分)

AEB Function (out of 16 points)

得分: 16分

Score:16 points



#### 目标车静止

Stationary - Target Vehicle  
(满分1分) (out of 1 point)

得分: 1分 Score:1 point



#### 目标车低速

Low Speed - Target Vehicle  
(满分1分) (out of 1 point)

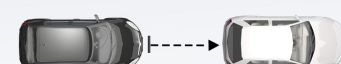
得分: 1分 Score:1 point



#### 目标车减速

Deceleration - Target Vehicle  
(满分1分) (out of 1 point)

得分: 0分 Score:0 points



#### 目标车静止

Stationary - Target Vehicle  
(满分8分) (out of 8 points)

得分: 8分 Score:8 points



#### 目标车低速

Low Speed - Target Vehicle  
(满分8分) (out of 8 points)

得分: 8分 Score:8 points



## 别克 世纪 2023款

### 六座蕴世版

## 智能安全

Intelligent Safety



### 车对车自动紧急制动系统 AEB C2C System

(满分22分) (out of 22 points)

得分: 20(19+1)分 Score:20(19+1) points

### 高级辅助功能

(满分3分)

### 得分: 1分

Advanced Assistance Function (out of 3 points)

Score:1 point

FCW辅助报警形式 FCW Assist Warning Form	<input checked="" type="radio"/>	1/1分(1 point)
主动式安全带预紧 Active Seat Belt Pre-Tensioning	<input type="radio"/>	0/1分(0 points)
紧急转向避让 Automatic Emergency Steering/ Emergency Steering Assist	<input type="radio"/>	0/1分(0 points)

搭载  
Configured

需选装  
Optional

未明确  
Undefined



## 别克 世纪 2023款

### 六座蕴世版

## 智能安全

Intelligent Safety



### 行人与骑行者自动紧急制动系统

AEB VRU System

(满分56分) (out of 56 points)

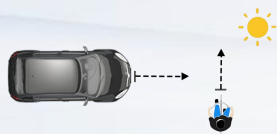
得分: 56分 Score:56 points

#### AEB自行车骑行者功能

AEB Bicyclist Function

(满分16分) (out of 16 points)

得分: 16分 Score:16 points



成人自行车骑行者近端横穿50%

Car to Bicyclist Nearside Adult 50%

(满分8分) (out of 8 points)

得分: 8分 Score:8 points

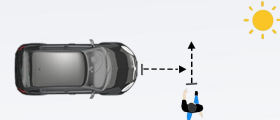


成人自行车骑行者纵向追尾50%

Car to Bicyclist Longitudinal Adult 50%

(满分8分) (out of 8 points)

得分: 8分 Score:8 points

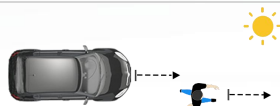


成人近端横穿25%

Car to Pedestrian Nearside Adult 25%

(满分8分) (out of 8 points)

得分: 8分 Score:8 points



成人纵向追尾25%

Car to Pedestrian Longitudinal Adult 25%

(满分6分) (out of 6 points)

得分: 6分 Score:6 points

#### AEB行人功能

AEB-Pedestrian Function

(满分40分) (out of 40 points)

得分: 40分 Score:40 points

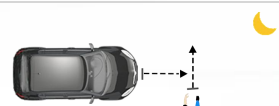


儿童近端横穿单侧遮挡50%

Car to Pedestrian Nearside Single Obstruction Child 50%

(满分8分) (out of 8 points)

得分: 8分 Score:8 points



成人近端横穿25%

Car to Pedestrian Nearside Adult 25%

(满分8分) (out of 8 points)

得分: 8分 Score:8 points



儿童近端横穿双侧遮挡50%

Car to Pedestrian Nearside Double Obstruction Child 50%

(满分5分) (out of 5 points)

得分: 5分 Score:5 points



成人远端横穿遮挡50%

Car to Pedestrian Farside Obstruction Adult 50%

(满分5分) (out of 5 points)

得分: 5分 Score:5 points



## 别克 世纪 2023款

### 六座蕴世版

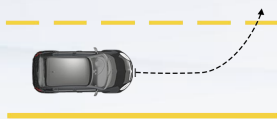


#### 车道辅助系统 Lane Keeping Assist System

(满分14分) (out of 14 points)  
得分: 14分 Score:14 points

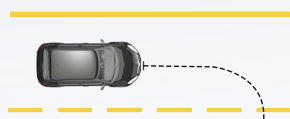
#### LDW功能 (满分6分) LDW Function (out of 6 points)

得分6分  
Score:6 points



直道偏离报警可重复性-  
左侧

Straight LDW Repeatability - Left  
(满分2分) (out of 2 points)  
得分: 2分 Score:2 points



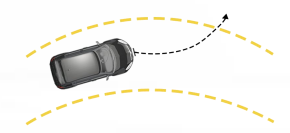
直道偏离报警可重复性-右  
侧

Straight LDW Repeatability - Right  
(满分2分) (out of 2 points)  
得分: 2分 Score:2 points



弯道偏离报警产生-  
左转弯右侧

Curved LDW Generation - Left Turn  
Right (满分1分) (out of 1 point)  
得分: 1分 Score:1 point



弯道偏离报警产生-  
右转弯左侧

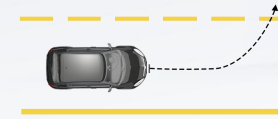
Curved LDW Generation - Right  
Turn Left (满分1分) (out of 1  
point)  
得分: 1分 Score:1 point

# 智能安全

Intelligent Safety

#### LDP功能 (满分8分) LDP Function (out of 8 points)

得分8分  
Score:8 points



直道偏离抑制-左侧

Straight LDP - Left  
(满分4分) (out of 4 points)  
得分: 4分 Score:4 points



直道偏离抑制-右侧

Straight LDP - Right  
(满分4分) (out of 4 points)  
得分: 4分 Score:4 points



## 别克 世纪 2023款

### 六座蕴世版

## 智能安全

Intelligent Safety



侧向辅助系统  
Blind Spot Detection

(满分15分) (out of 15 points)

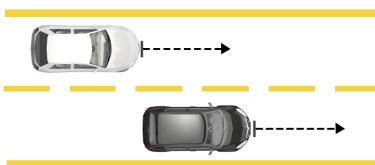
得分: 13.5(12.5+1)分 Score:13.5(12.5+1) points

### BSD功能 (满分10分)

BSD Function (out of 10)

得分8分

Score:8 points

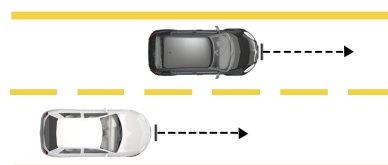


目标车超越主车-左侧

TV Overtaking SV - Left

(满分4分) (out of 4 points)

得分: 3分 Score:3 points

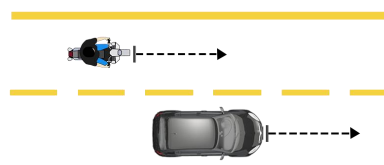


目标车超越主车-右侧

TV Overtaking SV - Right

(满分4分) (out of 4 points)

得分: 3分 Score:3 points

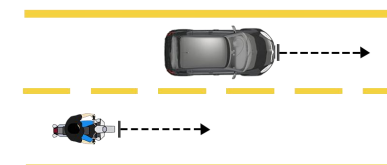


两轮目标车超越主车-左侧

Two-Wheeled TV Overtaking SV - Left

(满分1分) (out of 1 point)

得分: 1分 Score:1 point



两轮目标车超越主车-右侧

Two-Wheeled TV Overtaking SV - Right

(满分1分) (out of 1 point)

得分: 1分 Score:1 point



## 别克 世纪 2023款

### 六座蕴世版

## 智能安全

Intelligent Safety



### 侧向辅助系统 Blind Spot Detection

(满分15分) (out of 15 points)

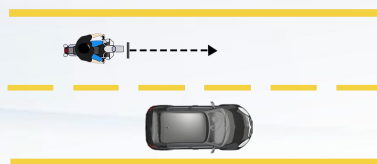
得分: 13.5(12.5+1)分 Score:13.5(12.5+1) points

### DOW功能 (满分3分)

DOW Function (out of 3 points)

得分:3分

Score: 3 points



### 两轮目标车超越主车

Two-Wheeled TV Overtaking SV

(满分3分) (out of 3 points)

得分: 3分 Score:3 points

### 高级辅助功能

(满分2分)

得分: 1.5分

Advanced Assistance Function (out of 2 points)

Score: 1.5 points

后向碰撞预警 Rear Collision Warning



0/0.5分(0 points)

后方交通穿行提示 Rear Cross Traffic Alarm



0.5/0.5分(0.5 points)

DOW后排独立报警 DOW Rear-Row Independent Alarm



1/1分(1 point)

搭载  
Configured



需选装  
Optional



未搭载  
Not configured





## 别克 世纪 2023款 六座蕴世版

泊车能力  
Parking Capability

19.6分 (满分27分)  
19.6 points (out of 27 points)

新功能  
New Function

1.5分 (满分2分)  
1.5 points (out of 2 points)

用户手册审查  
Review of User Manual

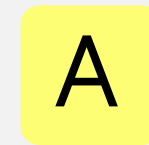
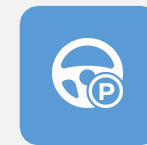
1分 (满分1分)  
1 point (out of 1 point)

## 智能泊车总得分

Total Score of Intelligent Parking

22.1分/74%

22.1 points/74%



G 优秀    A 良好    M 一般    P 较差  
G Good    A Acceptable    M Marginal    P Poor



## 别克 世纪 2023款 六座蕴世版

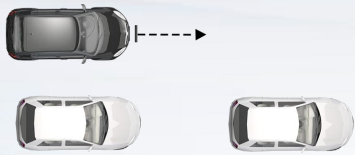
## 智能泊车 Intelligent Parking



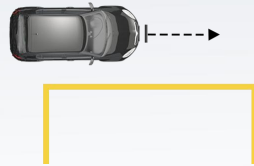
### 泊车能力 Parking Capability

(满分27分) (out of 27 points)

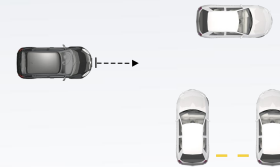
得分: 19.6分 Score:19.6 points



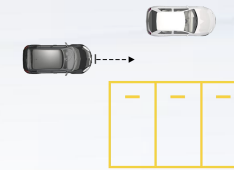
双边界车辆平行车位  
Parallel Parking Space with Two  
Bordering Vehicles  
得分: 3.6分 (满分6分)  
Score:3.6 points (out of 6 points)



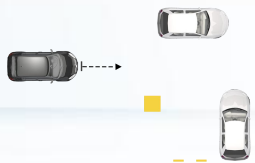
白色标线平行车位  
Parallel Parking Space with  
White Markings  
得分: 3分 (满分3分)  
Score:3 points (out of 3 points)



双边界车辆垂直车位  
Vertical Parking Space with Two  
Bordering Vehicles  
得分: 4.2分 (满分6分)  
Score:4.2 points (out of 6 points)



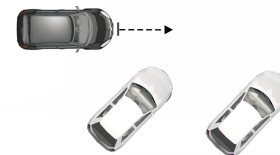
白色标线垂直车位  
Vertical Parking Space with White  
Markings  
得分: 3分 (满分3分)  
Score:3 points (out of 3 points)



方柱垂直车位-左方柱  
Column-Defined Vertical Parking  
Space - Left Column  
得分: 2.1分 (满分3分)  
Score:2.1 points (out of 3 points)



方柱垂直车位-右方柱  
Column-Defined Vertical  
Parking Space - Right Column  
得分: 1.5分 (满分3分)  
Score:1.5 points (out of 3 points)



双边界车辆斜向车位  
Skew Parking Space with Two  
Bordering Vehicles  
得分: 1.2分 (满分2分)  
Score:1.2 points (out of 2 points)



白色标线斜向车位  
Skew Parking Space with White  
Markings  
得分: 1分 (满分1分)  
Score:1 point (out of 1 point)





## 别克 世纪 2023款

### 六座蕴世版

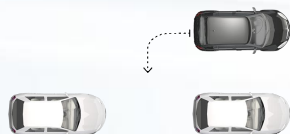
## 智能泊车

Intelligent Parking

### 新功能 New Function

(满分2分)  
(out of 2 points)

得分: 1.5分  
Score:1.5 points



#### 平行车位远程操控泊入泊出

Remotely Controlled Parking-in and Parking-out in Parallel Parking Space

得分: 1分 (满分1分)

Score:1 point (out of 1 point)



#### 垂直车位远程操控泊入泊出

Remotely Controlled Parking-in and Parking-out in Vertical Parking Space

得分: 0.5分 (满分1分)

Score:0.5 points (out of 1 point)

### 用户手册审查

Review of User Manual

(满分1分)  
(out of 1 point)

得分: 1分

Score:1 point

系统定义 System Definition	●	0.25/0.25分(0.25 points)
驾驶员责任 Driver Responsibility	●	0.25/0.25分(0.25 points)
系统使用条件 System Service Conditions	●	0.25/0.25分(0.25 points)
系统局限性 System Limitation	●	0.25/0.25分(0.25 points)

明确  
Defined



未明确  
Undefined





## 别克 世纪 2023款

### 六座蕴世版

#### 语音交互

Voice Interaction

**17.9分** (满分19分)

17.9 points (out of 19 points)

#### 触屏交互

Touch Screen Interaction

**12.5分** (满分15分)

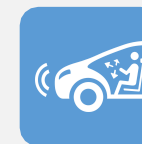
12.5 points (out of 15 points)

### 智能交互总得分

Total Score of Intelligent Interaction

**30.4分/89%**

30.4 points/89%



**G** 优秀    **A** 良好    **M** 一般    **P** 较差  
**G** Good    **A** Acceptable    **M** Marginal    **P** Poor



## 别克 世纪 2023款

### 六座蕴世版

## 智能交互

Intelligent Interaction



### 语音交互 Voice Interaction

(满分19分) (out of 19 points)

得分: 17.9分 Score:17.9 points



### 触屏交互 Touch Screen Interaction

(满分15分) (out of 15 points)

得分: 12.5分 Score:12.5 points

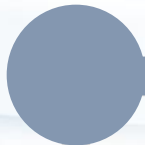
唤醒  
Wake-up



4/4分 (4 points)

功能满足度

Functional Satisfaction



9.7/10分 (9.7 points)

功能丰富度

Functional Richness



4/4分 (4 points)

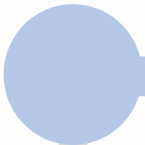
方言支持度

Dialect Support



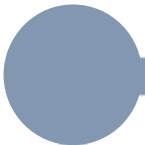
0.2/1分 (0.2 points)

可用度  
Availability



2.5/2.5分 (2.5 points)

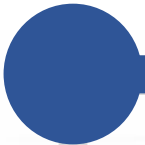
丰富度  
Richness



2.5/2.5分 (2.5 points)

应用启动时间

Application Startup Time



3.5/6分 (3.5 points)

流畅度  
Fluency



4/4分 (4 points)



# 中国智能汽车指数 导航智能驾驶 (NP) 测评结果

China Intelligent Vehicle Index

Navigation Pilot (NP) Rating Results

## (2023年第五批)

(Batch 5 in 2023)



BUICK

## 别克 世纪 2023款

### 六座蕴世版



#### 车辆类型

Vehicle Type

多用途乘用车

#### 整车型号

Vehicle Model

SGM6523UBA3

#### 生产厂家

Manufacturer

上汽通用汽车有限公司

#### 制造年月

Manufacture Date

2023-11

#### NP功能名称

NP Function Name

智慧领航 Navigation on Pilot (NOP)

#### NP软件版本

NP Software Version

IDS2.5 V9.5.1

#### 车辆识别代号

VIN

LSGUP8AL2PA120458

#### 传感器及算力配置

Sensor and Computation Configuration

#### 类型

Type

#### 数量/性能

Qty/  
Performance

#### 摄像头

Camera

5个

#### 毫米波雷达

Millimeter-Wave Radar

5个

#### 激光雷达

Laser Radar

0个

#### 智能驾驶芯片 10.5TOPS

Intelligent Driving Chip



BUICK

## 别克 世纪 2023款

### 六座蕴世版



## 导航智能驾驶测评 (高速公路)

Navigation Pilot Evaluation  
(Expressway)



车辆安全性得分: 83.07分/100分

Score of Vehicle Safety:83.07/100

功能完成度得分: 98.70分/100分

Score of Functional Completion:98.70/100

最终得分=min{车辆安全性得分, 功能完成度得分}=83.07分

Final Score= min {Score of Vehicle Safety Score and Score of Functional Completion} = 83.07 points

注: G+代表极优秀水平, 满分100分

Note: G+ = extremely excellent, with a full score of 100 points.





BUICK

## 别克 世纪 2023款

### 六座蕴世版

#### 前车静止 (直道)

Forward Vehicle Being  
Stationary (on a Straight Lane)

**14.00分** (满分14分)

14.00 points (out of 14 points)

#### 前车静止 (直道)

- 目标车偏置

Forward Vehicle Being  
Stationary (on a Straight Lane) -  
TV Being Offset

**14.00分** (满分14分)

14.00 points (out of 14 points)

#### 前车静止 (直道)

- 目标车斜置

Forward Vehicle Being  
Stationary (on a Straight Lane) -  
TV Being Skewed

**14.00分** (满分14分)

14.00 points (out of 14 points)

#### 前车静止 (弯道)

Forward Vehicle Being  
Stationary (on a Curved Lane)

**14.00分** (满分14分)

14.00 points (out of 14 points)

#### 前车切入

Forward Vehicle Cutting in

**13.07分** (满分14分)

13.07 points (out of 14 points)

#### 前车切出

Forward Vehicle Cutting out

**14.00分** (满分15分)

14.00 points (out of 15 points)

#### 交通锥避让

Avoidance of Traffic Cones

**0分** (满分15分)

0 points (out of 15 points)

## 车辆安全性测试 Vehicle Safety Test

(满分100分)

**得分: 83.07分**

(out of 100 points)

Score:83.07 points



BUICK

## 别克 世纪 2023款

### 六座蕴世版

## 车辆安全性测试

### Vehicle Safety Test

(满分100分)

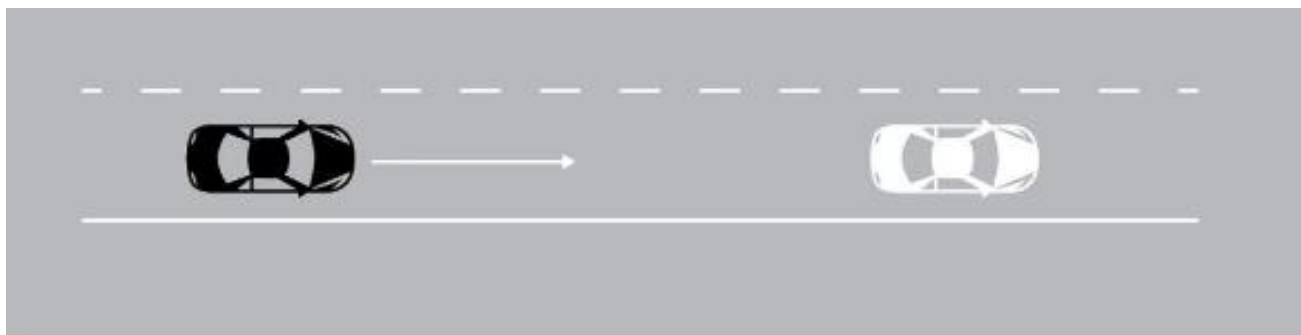
得分: 83.07分

(out of 100 points)

Score:83.07 points

#### ① 前车静止 (直道)

Forward Vehicle Being Stationary (on a Straight Lane)



得分 Score	满分 Full Score
14.00分 14.00 points	14分 14 points

#### ② 前车静止 (直道) - 目标车偏置

Forward Vehicle Being Stationary (on a Straight Lane) - TV Being Offset



得分 Score	满分 Full Score
14.00分 14.00 points	14分 14 points





BUICK

别克 世纪 2023款

六座蕴世版

## 车辆安全性测试

### Vehicle Safety Test

(满分100分)

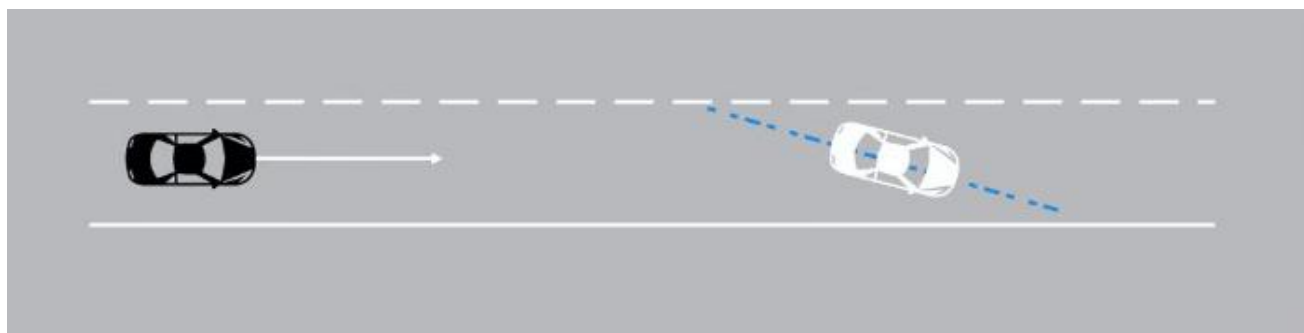
得分: 83.07分

(out of 100 points)

Score:83.07 points

#### ③ 前车静止 (直道) - 目标车斜置

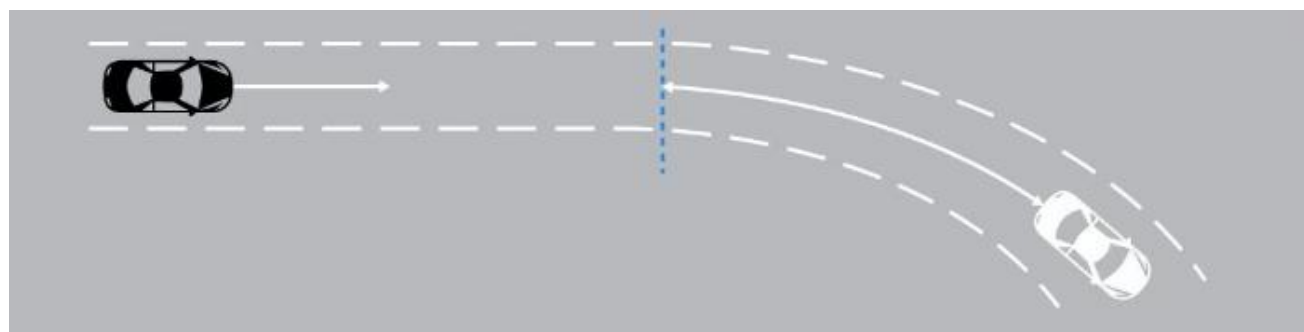
Forward Vehicle Being Stationary (on a Straight Lane) - TV Being Skewed



得分 Score	满分 Full Score
14.00分 14.00 points	14分 14 points

#### ④ 前车静止 (弯道)

Forward Vehicle Being Stationary (on a Curved Lane)



得分 Score	满分 Full Score
14.00分 14.00 points	14分 14 points



BUICK

## 别克 世纪 2023款

### 六座蕴世版

## 车辆安全性测试

### Vehicle Safety Test

(满分100分)

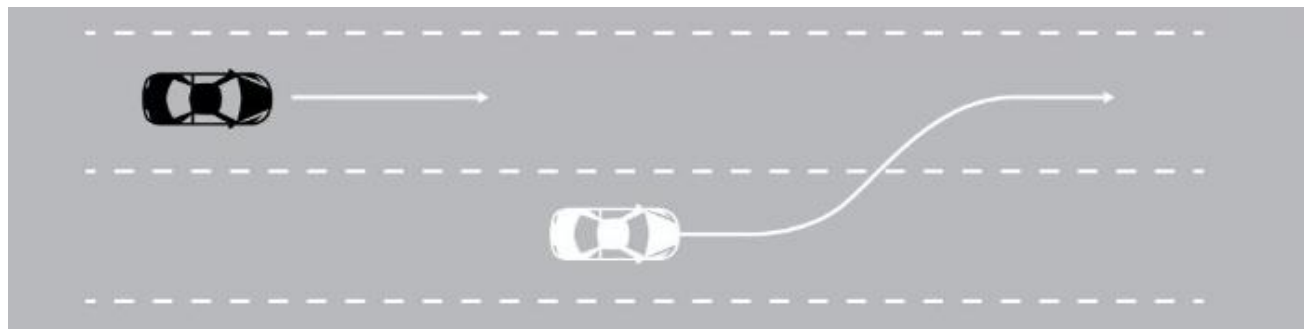
得分: 83.07分

(out of 100 points)

Score:83.07 points

#### ⑤ 前车切入

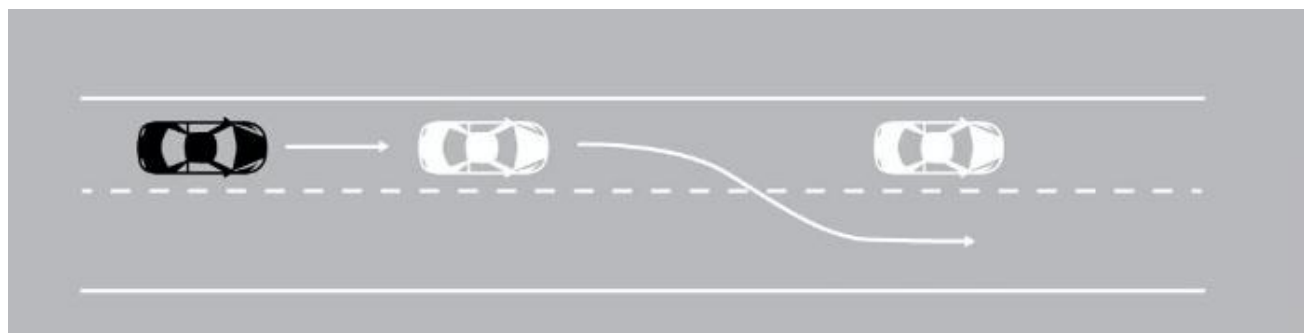
Forward Vehicle Cutting in



得分 Score	满分 Full Score
13.07分 13.07 points	14分 14 points

#### ⑥ 前车切出

Forward Vehicle Cutting out



得分 Score	满分 Full Score
14.00分 14.00 points	15分 15 points



BUICK

别克 世纪 2023款

六座蕴世版

## 车辆安全性测试

### Vehicle Safety Test

(满分100分)

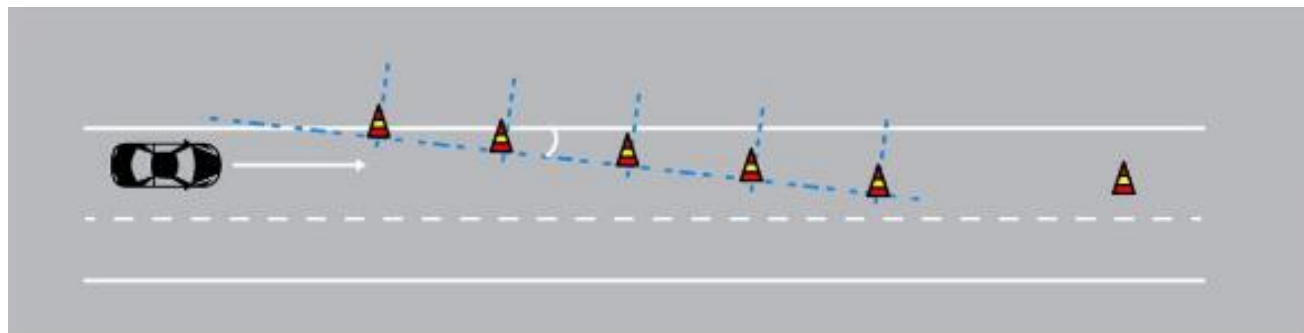
得分: 83.07分

(out of 100 points)

Score:83.07 points

#### ⑦ 交通锥避让

Avoidance of Traffic Cones



得分  
Score

0分  
0 points

满分  
Full Score

15分  
15 points



BUICK

## 别克 世纪 2023款

### 六座蕴世版

#### 拥堵走停

Stop-and-Go Traffic

5.00分 (满分5分)

5.00 points (out of 5 points)

#### 隧道通行

Tunnel Passing

5.00分 (满分5分)

5.00 points (out of 5 points)

#### 车道尽头导航 变道

Navigation for Lane Change  
at a Lane End

30.00分 (满分30分)

30.00 points (out of 30 points)

#### 高速汇出匝道

Expressway Exit Ramp

21.67分 (满分25分)

21.67 points (out of 25 points)

#### 匝道内路线选择

Route Selection in Ramp

10.00分 (满分10分)

10.00 points (out of 10 points)

#### 匝道汇入高速

Ramp Entrance Expressway

22.53分 (满分25分)

22.53 points (out of 25 points)

#### 额外罚分

Additional Penalty Points

3.50分

3.50 points

#### 额外加分

Additional bonus points

8.00分

8.00 points

### 功能完成度测试 Functional Completion Test

(满分100分)

得分: 98.70分

(out of 100 points)

Score: 98.70 points



BUICK

## 别克 世纪 2023款

### 六座蕴世版

# 功能完成度测试

## Functional Completion Test

(满分100分)

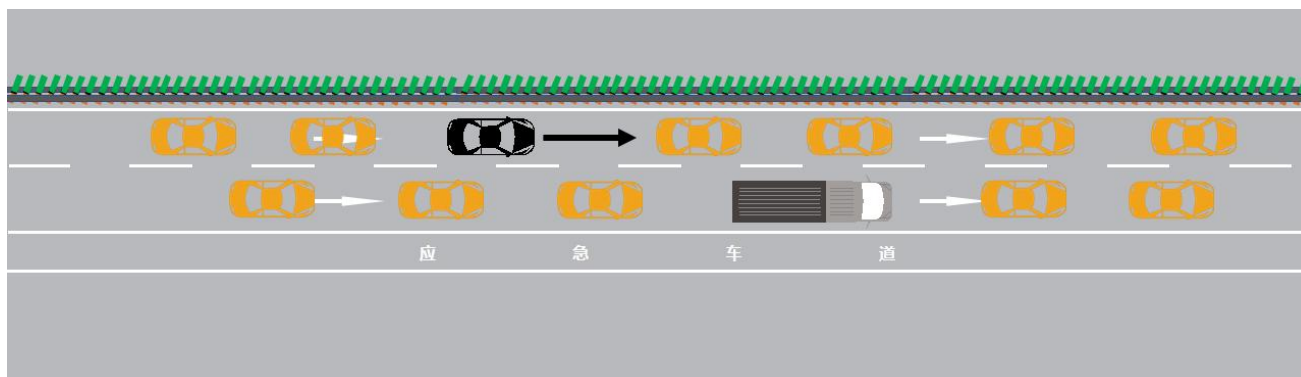
### 得分: 98.70分

(out of 100 points)

Score:98.70 points

### ① 拥堵走停

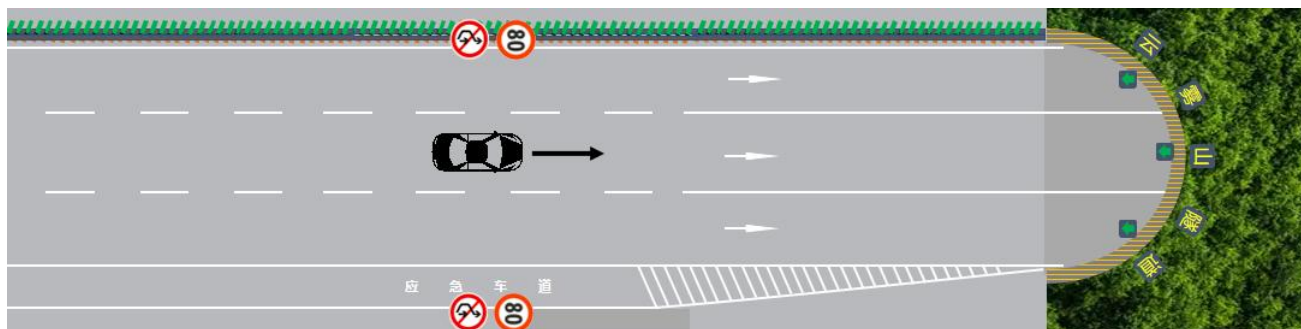
Stop-and-Go Traffic



得分 Score	满分 Full Score
5.00分 5.00 points	5分 5 points

### ② 隧道通行

Tunnel Passing



得分 Score	满分 Full Score
5.00分 5.00 points	5分 5 points



BUICK

### 别克 世纪 2023款

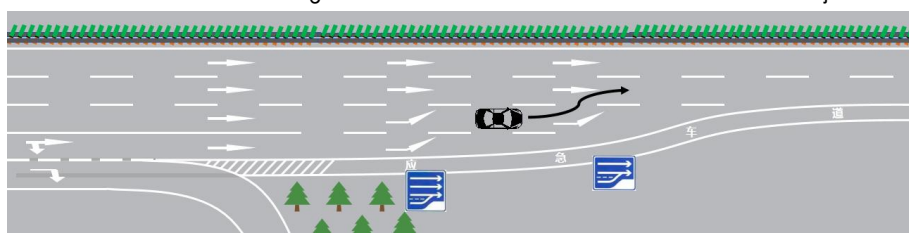
### 六座蕴世版

#### ③ 车道尽头导航变道

#### Navigation for Lane Change at a Lane End

工况1: 主车车道前方及相邻车道无环境车

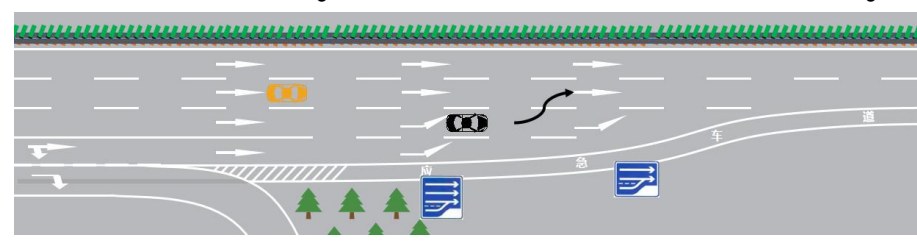
Condition 1: no surrounding vehicle in front of the SV's lane and in the adjacent lane



得分 Score	满分 Full Score
5.00分 5.00 points	5分 5 points

工况2: 主车车道前方无环境车, 相邻车道有 1 辆环境车

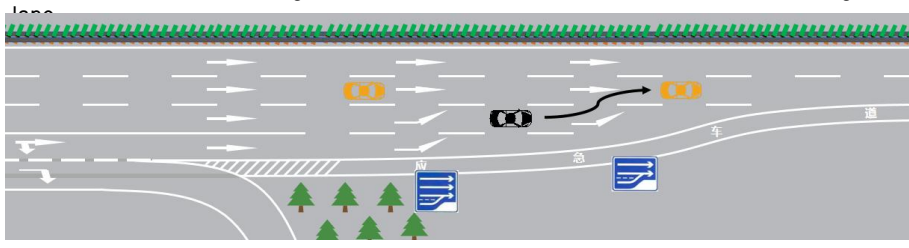
Condition 2: no surrounding vehicle in front of the SV's lane and 1 surrounding vehicle in the adjacent lane



得分 Score	满分 Full Score
5.00分 5.00 points	5分 5 points

工况3: 主车车道前方无环境车, 相邻车道有 2 辆环境车

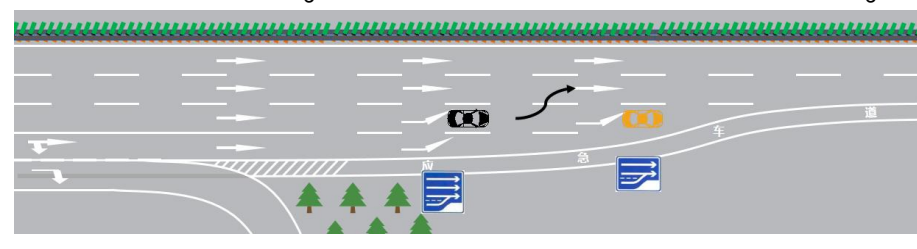
Condition 3: no surrounding vehicle in front of the SV's lane and 2 surrounding vehicles in the adjacent lane



得分 Score	满分 Full Score
5.00分 5.00 points	5分 5 points

工况4: 主车车道前方有 1 辆环境车, 相邻车道无环境车

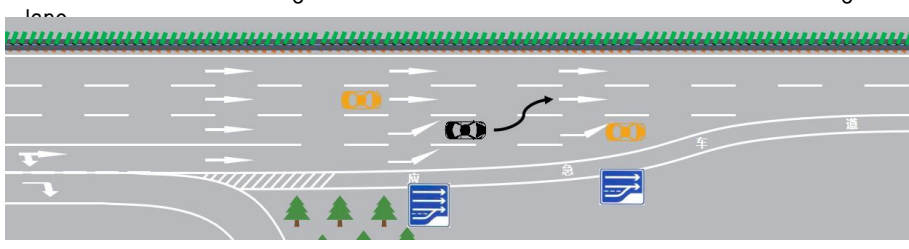
Condition 4: 1 surrounding vehicle in front of the SV's lane and no surrounding vehicle in the adjacent lane



得分 Score	满分 Full Score
5.00分 5.00 points	5分 5 points

工况5: 主车车道前方有 1 辆环境车, 相邻车道有 1 辆环境车

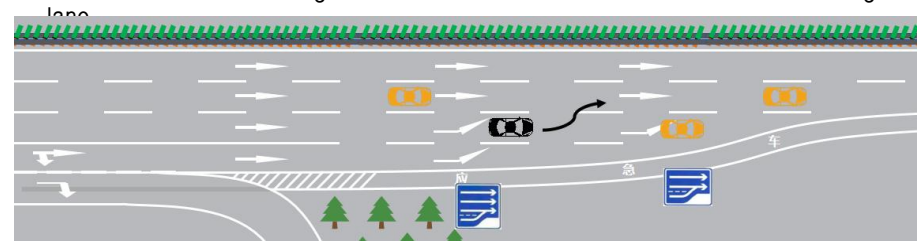
Condition 5: 1 surrounding vehicle in front of the SV's lane and 1 surrounding vehicle in the adjacent lane



得分 Score	满分 Full Score
5.00分 5.00 points	5分 5 points

工况6: 主车车道前方有 1 辆环境车, 相邻车道有 2 辆环境车

Condition 6: 1 surrounding vehicle in front of the SV's lane and 2 surrounding vehicles in the adjacent lane



得分 Score	满分 Full Score
5.00分 5.00 points	5分 5 points

(满分100分)

得分: 98.70分

(out of 100 points)

Score:98.70 points

## 功能完成度测试 Functional Completion Test



BUICK

### 别克 世纪 2023款

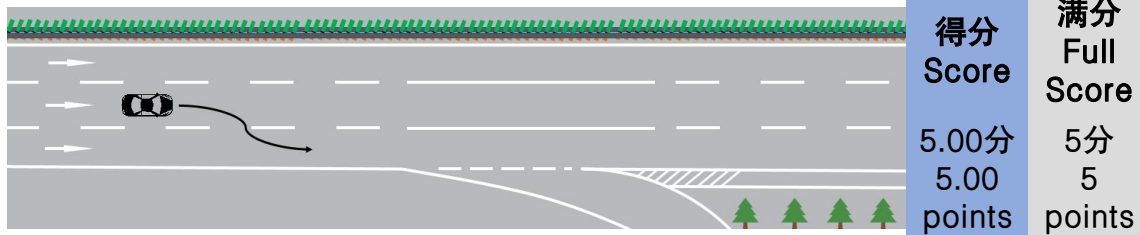
### 六座蕴世版

#### ④ 高速汇出匝道

#### Expressway Exit Ramp

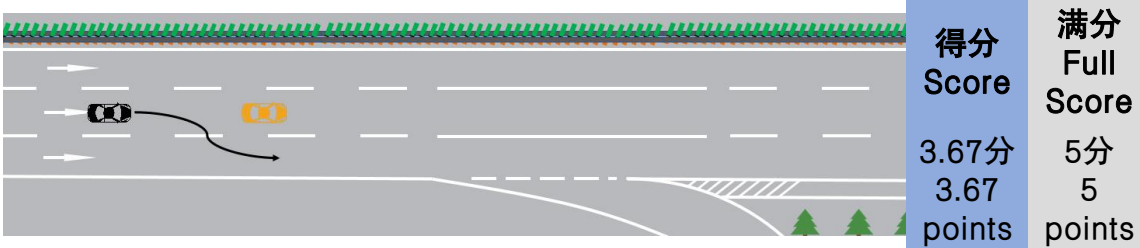
工况1: 主车车道前方及相邻车道无环境车

Condition 1: no surrounding vehicle in front of the SV's lane and in the adjacent lane



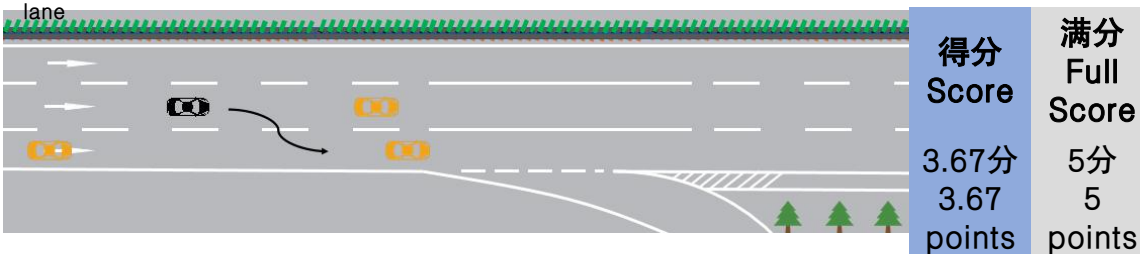
工况3: 主车车道前方有 1 辆环境车, 相邻车道无环境车

Condition 3: 1 surrounding vehicle in front of the SV's lane and no surrounding vehicle in the adjacent lane



工况5: 主车车道前方有 1 辆环境车, 相邻车道有 2 辆环境车

Condition 5: 1 surrounding vehicle in front of the SV's lane and 2 surrounding vehicles in the adjacent lane



## 功能完成度测试

## Functional Completion Test

(满分100分)

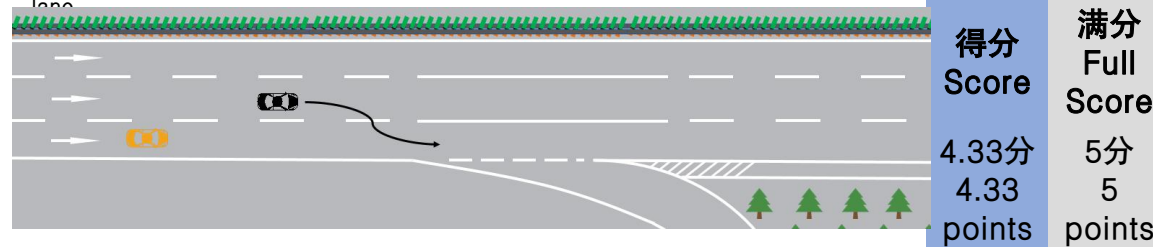
得分: 98.70分

(out of 100 points)

Score:98.70 points

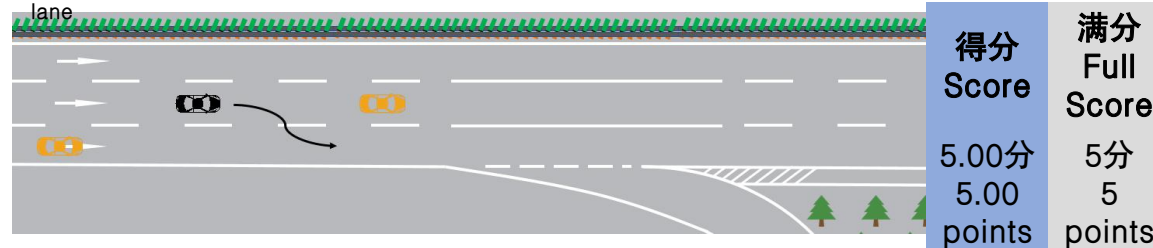
工况2: 主车车道前方无环境车, 相邻车道有 1 辆环境车

Condition 2: no surrounding vehicle in front of the SV's lane and 1 surrounding vehicle in the adjacent lane



工况4: 主车车道前方有 1 辆环境车, 相邻车道有 1 辆环境车

Condition 4: 1 surrounding vehicle in front of the SV's lane and 1 surrounding vehicle in the adjacent lane





BUICK

### 别克 世纪 2023款

### 六座蕴世版

#### ⑤ 匝道内路线选择

#### Route Selection in Ramp

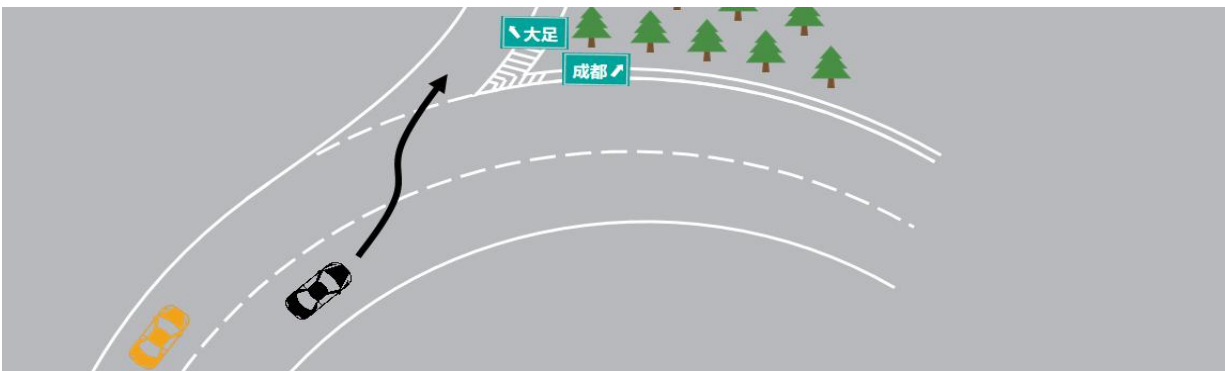
工况1: 主车车道前方及相邻车道无环境车

Condition 1: no surrounding vehicle in front of the SV's lane and in the adjacent lane



工况2: 主车车道前方无环境车, 相邻车道有 1 辆环境车

Condition 2: no surrounding vehicle in front of the SV's lane and 1 surrounding vehicle in the adjacent lane



## 功能完成度测试 Functional Completion Test

(满分100分)

得分: 98.70分

(out of 100 points)

Score:98.70 points

得分  
Score

5.00分  
5.00 points

满分  
Full Score

5分  
5 points

得分  
Score

5.00分  
5.00 points

满分  
Full Score

5分  
5 points





BUICK

### 别克 世纪 2023款

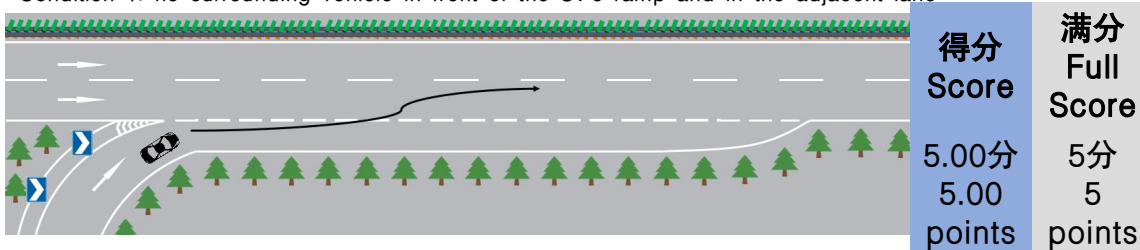
### 六座蕴世版

#### ⑥ 匝道汇入高速

#### Ramp Entrance Expressway

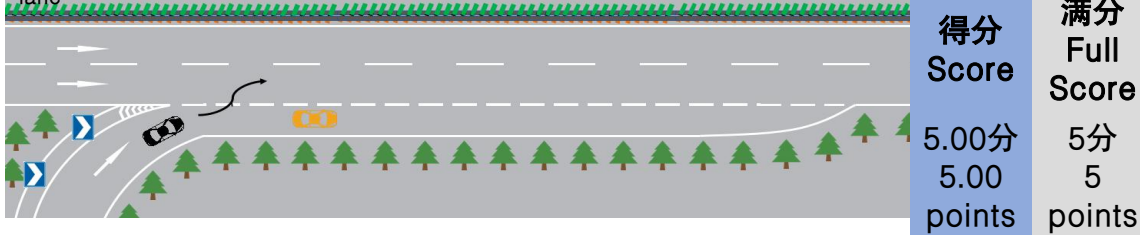
工况1: 主车所在匝道前方及相邻车道无环境车

Condition 1: no surrounding vehicle in front of the SV's ramp and in the adjacent lane



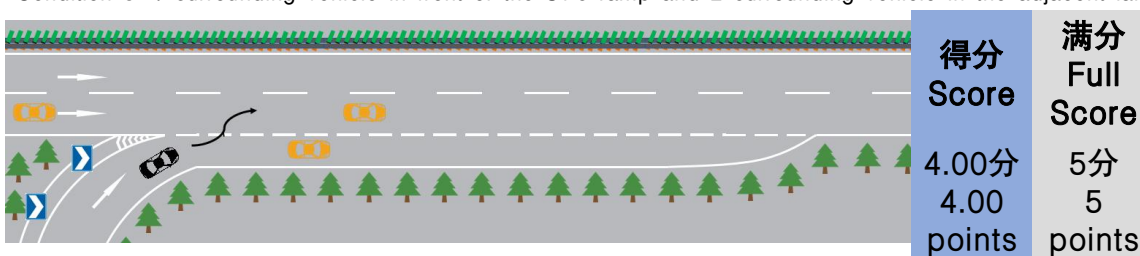
工况3: 主车所在匝道前方有 1 辆环境车, 相邻车道无环境车

Condition 3: 1 surrounding vehicle in front of the SV's ramp and no surrounding vehicle in the adjacent lane



工况5: 主车所在匝道前方有 1 辆环境车, 相邻车道有 2 辆环境车

Condition 5: 1 surrounding vehicle in front of the SV's ramp and 2 surrounding vehicle in the adjacent lane



## 功能完成度测试

## Functional Completion Test

(满分100分)

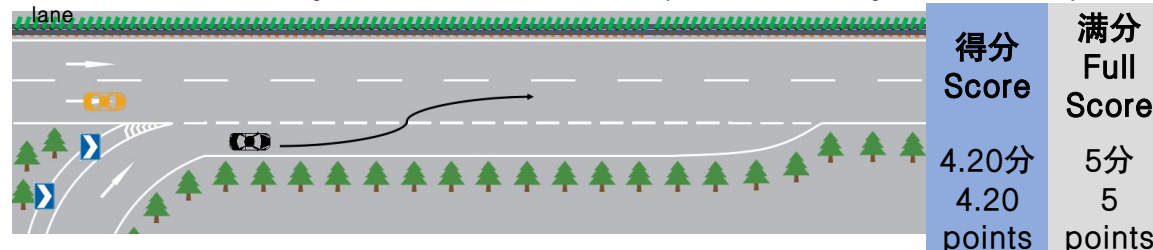
得分: 98.70分

(out of 100 points)

Score:98.70 points

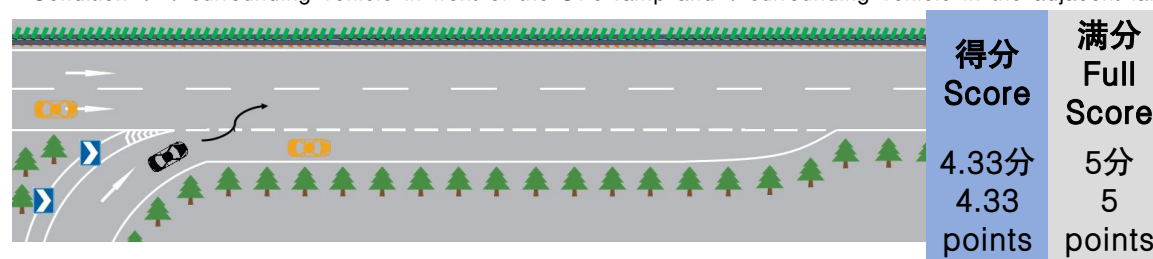
工况2: 主车所在匝道前方无环境车, 相邻车道有 1 辆环境车

Condition 2: no surrounding vehicle in front of the SV's ramp and 1 surrounding vehicle in the adjacent lane



工况4: 主车所在匝道前方有 1 辆环境车, 相邻车道有 1 辆环境车

Condition 4: 1 surrounding vehicle in front of the SV's ramp and 1 surrounding vehicle in the adjacent lane





BUICK

别克 世纪 2023款

六座蕴世版

## 功能完成度测试 Functional Completion Test

(满分100分)

得分: 98.70分

(out of 100 points)

Score:98.70 points

### ⑦ 额外罚分

Additional Penalty Points

扣分项 Deduction Item		实扣分 Actual Deduction
路段内 In a section	超过道路限速 Beyond the road speed limit	0
	变道不打转向灯 Lane change without turning on the turn signal	0
	压实线 Crossing a solid line	0
	感知系统误识别导致意料之外的制动或转向 Unintended braking or steering caused by misidentification of the sensing system	2.00
匝道内 In ramp	压实线 Crossing a solid line	0
	感知系统误识别导致意料之外的制动或转向 Unintended braking or steering caused by misidentification of the sensing system	0
NP功能ODD适应性 ODD adaptability of NP function	在主车ODD支持路段, NP功能无法正常激活, 适应性差, 影响驾驶员体验 In the ODD-supported section of the TV, the NP function cannot be activated normally and is not well adapted, affecting the driver's experience	1.50



BUICK

别克 世纪 2023款

六座蕴世版

## 功能完成度测试 Functional Completion Test

(满分100分)

得分: 98.70分

(out of 100 points)

Score:98.70 points

### ⑧ 额外加分

Additional bonus points

加分项 Bonus Item	实加分 Actual Bonus
前方慢行车辆自主变道 Autonomous lane change due to the forward slow-moving vehicle	2.00
智慧避让侧方大型车辆 Intelligently avoid lateral heavy-duty vehicles	3.00
主车回避并行相邻车道环境车 SV avoidance of parallel surrounding vehicles in adjacent lanes	3.00



# •安全护航 智慧出行

• Guard by Safety, Travel with Intelligence