



中国智能汽车指数测评结果

China Intelligent Vehicle Index Rating Results

(2023年第五批)

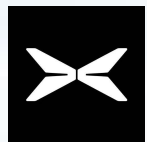
(Batch 5 in 2023)

中国 · 重庆

Chongqing · China

2024年3月

3,2024



小鹏 G6 2023款

580长续航 Max



车辆类型
Vehicle Type

纯电动多用途乘用车

整车型号
Vehicle Model

NHQ6480BEVFA

生产厂家
Manufacturer

肇庆小鹏新能源投资有限公司

制造年月
Manufacture Date

2023-10

能源类型
Energy Type

纯电动

系统版本
System Version

Xmart OS 4.5.0

车辆识别代号
VIN

L1NNSGHA4PB027765

环境感知传感器

Environment Perception Sensor

传感器类型
Sensor Type

数量
Qty

摄像头
Camera

12

激光雷达
Laser Radar

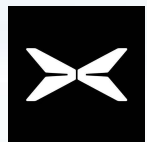
2

毫米波雷达
Millimeter-Wave Radar

5

超声波雷达
Ultrasonic-Wave Radar

12



小鹏 G6 2023款

580长续航 Max



> 智能行车
Intelligent Driving



> 智能安全
Intelligent Safety



> 智能泊车
Intelligent Parking



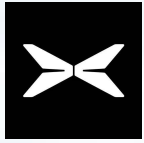
> 智能交互
Intelligent Interaction



> 智能能效
Intelligent Energy Efficiency



 优秀  良好  一般  较差
 Good  Acceptable  Marginal  Poor



小鹏 G6 2023款
580长续航 Max

单车道纵向
控制能力

Single-Lane Longitudinal
Control Capability

22分 (满分22.5分)

22 points (out of 22.5 points)

单车道横向
控制能力

Single-Lane Lateral
Control Capability

1分 (满分1分)

1 point (out of 1 point)

单车道纵横
向控制能力

Single-Lane Combined
Longitudinal and Lateral

2分 (满分4分)

2 points (out of 4 points)

换道辅助能力

Lane-Change Assistance
Capability

1.5分 (满分1.5分)

1.5 points (out of 1.5 points)

关联功能

Correlation Function

1分 (满分2分)

1 point (out of 2 points)

用户手册审查

Review of User Manual

1分 (满分1分)

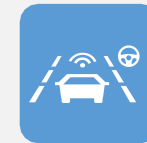
1 point (out of 1 point)

智能行车总得分

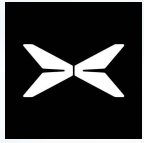
Total Score of Intelligent Driving

28.5分/89%

28.5 points/89%



G 优秀 A 良好 M 一般 P 较差
G Good A Acceptable M Marginal P Poor



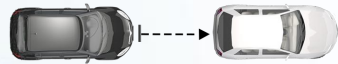
小鹏 G6 2023款
580长续航 Max

智能行车
Intelligent Driving

单车道纵向控制能力

Single-Lane Longitudinal Control Capability

(满分22.5分) (out of 22.5 points)
得分: 22分 Score: 22 points



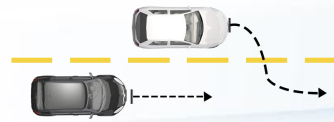
目标车静止
Stationary - Target Vehicle
(满分6分) (out of 6 points)
得分: 6分 Score:6 points



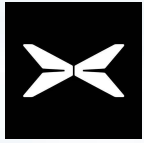
目标车低速
Low Speed - Target Vehicle
(满分9分) (out of 9 points)
得分: 8.5分 Score:8.5 points



目标车减速
Deceleration - Target Vehicle
(满分3分) (out of 3 points)
得分: 3分 Score:3 points



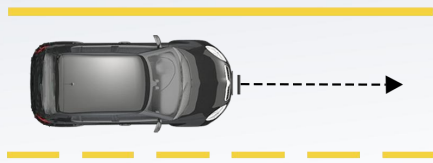
前车切入
Forward Vehicle Cutting in
(满分4.5分) (out of 4.5 points)
得分: 4.5分 Score:4.5 points



小鹏 G6 2023款
580长续航 Max

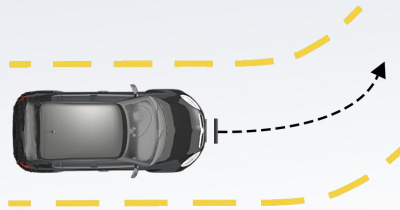
智能行车
Intelligent Driving

单车道横向控制能力 (满分1分)
Single-Lane Lateral Control Capability (out of 1 point)
得分: 1分
Score:1 point



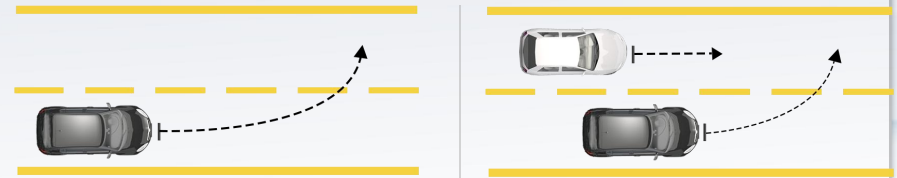
车道居中行驶 (满分1分)
Lane Center Driving (out of 1 point)
得分: 1分
Score:1 point

单车道纵横向控制能力 (满分4分)
Single-Lane Combined Longitudinal and Lateral Control Capability (out of 4 points)
得分: 2分
Score:2 points



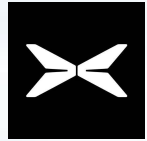
直道驶入弯道 (满分4分)
Straight to Curve (out of 4 points)
得分: 2分
Score:2 points

换道辅助能力 (满分1.5分)
Lane-Change Assistance Capacity (out of 1.5 points)
得分: 1.5分
Score:1.5 points



盲区无车 (满分0.5分)
No Vehicle in Blind Spots (out of 0.5 points)
得分: 0.5分
Score:0.5 points

盲区有车 (满分1分)
Vehicles in Blind Spots (out of 1 point)
得分: 1分
Score:1 point



小鹏 G6 2023款
580长续航 Max

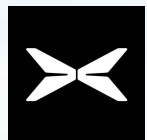
智能行车
Intelligent Driving

关联功能 (满分2分) Correlation Function (out of 2 points)		得分: 1分 Score:1 point
抬头显示 Head up Display	—	0/0.5分(0 points)
驾驶员监控 Driver Monitoring	●	1/1分(1 point)
蜂窝车联网 Cellular Internet of Vehicle	—	0/0.5分(0 points)

搭载 Configured ● 需选装 Optional ○ 未明确 Undefined —

用户手册审查 (满分1分) Review of User Manual (out of 1 point)		得分: 1分 Score:1 point
系统定义 System Definition	●	0.25/0.25分(0.25 points)
驾驶员责任 Driver Responsibility	●	0.25/0.25分(0.25 points)
系统使用条件 System Service Condition	●	0.25/0.25分(0.25 points)
系统局限性 System Limitation	●	0.25/0.25分(0.25 points)

明确 Defined ● 未明确 Undefined —



小鹏 G6 2023款

580长续航 Max

车对车自动紧急制动系统

AEB C2C System

19分 (满分22分)

19 points (out of 22 points)

行人与骑行者自动紧急制动系统

AEB VRU System

56分 (满分56分)

56 points (out of 56 points)

车道辅助系统

Lane Keeping Assist System

14分 (满分14分)

14 points (out of 14 points)

侧向辅助系统

Blind Spot Detection

15分 (满分15分)

15 points (out of 15 points)

智能安全总得分

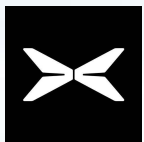
Total Score of Intelligent Safety

104分/97%

104 points/97%



G 优秀 A 良好 M 一般 P 较差
G Good A Acceptable M Marginal P Poor



小鹏 G6 2023款

580长续航 Max

智能安全

Intelligent Safety



车对车自动紧急制动系统

AEB C2C System

(满分22分) (out of 22 points)

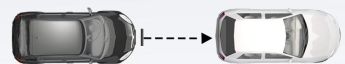
得分: 19(18+1)分 Score:19(18+1) points

FCW功能 (满分3分)

FCW Function (out of 3 points)

得分: 2分

Score:2 points



目标车静止

Stationary - Target Vehicle
(满分1分) (out of 1 point)

得分: 1分 Score:1 point



目标车低速

Low Speed - Target Vehicle
(满分1分) (out of 1 point)

得分: 1分 Score:1 point



目标车减速

Deceleration - Target Vehicle
(满分1分) (out of 1 point)

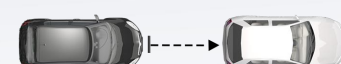
得分: 0分 Score:0 points

AEB功能 (满分16分)

AEB Function (out of 16 points)

得分: 16分

Score:16 points



目标车静止

Stationary - Target Vehicle
(满分8分) (out of 8 points)

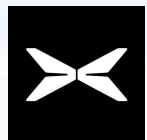
得分: 8分 Score:8 points



目标车低速

Low Speed - Target Vehicle
(满分8分) (out of 8 points)

得分: 8分 Score:8 points



小鹏 G6 2023款

580长续航 Max

智能安全

Intelligent Safety



车对车自动紧急制动系统
AEB C2C System

(满分22分) (out of 22 points)

得分: 19(18+1)分 Score:19(18+1) points

高级辅助功能

(满分3分)

得分: 0分

Advanced Assistance Function (out of 3 points)

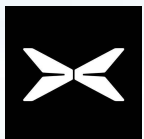
Score:0 point

FCW辅助报警形式 FCW Assist Warning Form	<input type="checkbox"/>	0/1分(0 points)
主动式安全带预紧 Active Seat Belt Pre-Tensioning	<input type="checkbox"/>	0/1分(0 points)
紧急转向避让 Automatic Emergency Steering/ Emergency Steering Assist	<input type="checkbox"/>	0/1分(0 points)

搭载
Configured

需选装
Optional

未明确
Undefined



小鹏 G6 2023款

580长续航 Max

智能安全

Intelligent Safety



行人与骑行者自动紧急制动系统

AEB VRU System

(满分56分) (out of 56 points)

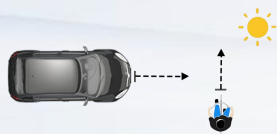
得分: 56分 Score:56 points

AEB自行车骑行者功能

AEB Bicyclist Function

(满分16分) (out of 16 points)

得分: 16分 Score:16 points



成人自行车骑行者近端横穿50%

Car to Bicyclist Nearside Adult 50%

(满分8分) (out of 8 points)

得分: 8分 Score:8 points

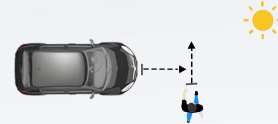


成人自行车骑行者纵向追尾50%

Car to Bicyclist Longitudinal Adult 50%

(满分8分) (out of 8 points)

得分: 8分 Score:8 points

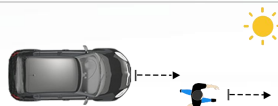


成人近端横穿25%

Car to Pedestrian Nearside Adult 25%

(满分8分) (out of 8 points)

得分: 8分 Score:8 points



成人纵向追尾25%

Car to Pedestrian Longitudinal Adult 25%

(满分6分) (out of 6 points)

得分: 6分 Score:6 points

AEB行人功能

AEB-Pedestrian Function

(满分40分) (out of 40 points)

得分: 40分 Score:40 points

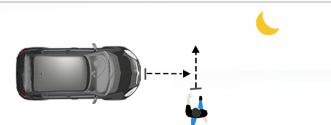


儿童近端横穿单侧遮挡50%

Car to Pedestrian Nearside Single Obstruction Child 50%

(满分8分) (out of 8 points)

得分: 8分 Score:8 points

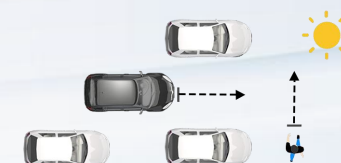


成人近端横穿25%

Car to Pedestrian Nearside Adult 25%

(满分8分) (out of 8 points)

得分: 8分 Score:8 points

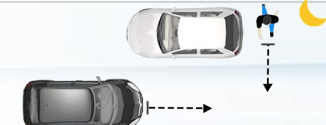


儿童近端横穿双侧遮挡50%

Car to Pedestrian Nearside Double Obstruction Child 50%

(满分5分) (out of 5 points)

得分: 5分 Score:5 points

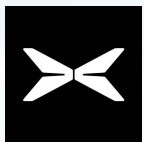


成人远端横穿遮挡50%

Car to Pedestrian Farside Obstruction Adult 50%

(满分5分) (out of 5 points)

得分: 5分 Score:5 points



小鹏 G6 2023款

580长续航 Max



车道辅助系统 Lane Keeping Assist System

(满分14分) (out of 14 points)
得分: 14分 Score:14 points

LDW功能 (满分6分) LDW Function (out of 6 points)

得分6分
Score:6 points

直道偏离报警可重复性-
左侧

Straight LDW Repeatability - Left
(满分2分) (out of 2 points)
得分: 2分 Score:2 points

直道偏离报警可重复性-右
侧

Straight LDW Repeatability - Right
(满分2分) (out of 2 points)
得分: 2分 Score:2 points

弯道偏离报警产生-
左转弯右侧

Curved LDW Generation - Left Turn
Right (满分1分) (out of 1 point)
得分: 1分 Score:1 point

弯道偏离报警产生-
右转弯左侧

Curved LDW Generation - Right
Turn Left (满分1分) (out of 1
point)
得分: 1分 Score:1 point

LDP功能 (满分8分) LDP Function (out of 8 points)

得分8分
Score:8 points

直道偏离抑制-左侧

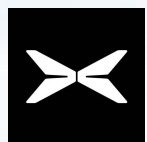
Straight LDP - Left
(满分4分) (out of 4 points)
得分: 4分 Score:4 points

直道偏离抑制-右侧

Straight LDP - Right
(满分4分) (out of 4 points)
得分: 4分 Score:4 points

智能安全

Intelligent Safety



小鹏 G6 2023款

580长续航 Max

智能安全

Intelligent Safety



侧向辅助系统
Blind Spot Detection

(满分15分) (out of 15 points)

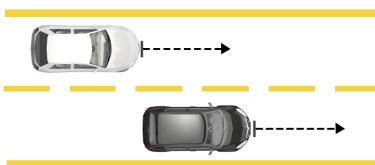
得分: 15(14+1)分 Score:15(14+1) points

BSD功能 (满分10分)

BSD Function (out of 10)

得分10分

Score:10 points

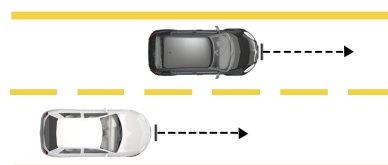


目标车超越主车-左侧

TV Overtaking SV - Left

(满分4分) (out of 4 points)

得分: 4分 Score:4 points

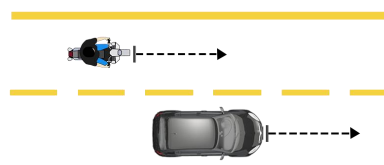


目标车超越主车-右侧

TV Overtaking SV - Right

(满分4分) (out of 4 points)

得分: 4分 Score:4 points

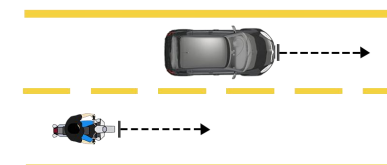


两轮目标车超越主车-左侧

Two-Wheeled TV Overtaking SV - Left

(满分1分) (out of 1 point)

得分: 1分 Score:1 point

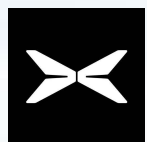


两轮目标车超越主车-右侧

Two-Wheeled TV Overtaking SV - Right

(满分1分) (out of 1 point)

得分: 1分 Score:1 point



小鹏 G6 2023款

580长续航 Max

智能安全

Intelligent Safety



侧向辅助系统
Blind Spot Detection

(满分15分) (out of 15 points)

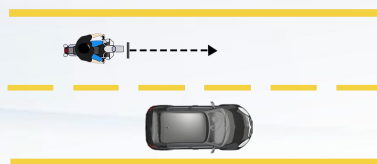
得分: 15(14+1)分 Score:15(14+1) points

DOW功能 (满分3分)

DOW Function (out of 3 points)

得分:3分

Score: 3 points



两轮目标车超越主车

Two-Wheeled TV Overtaking SV

(满分3分) (out of 3 points)

得分: 3分 Score:3 points

高级辅助功能

(满分2分)

得分: 1分

Advanced Assistance Function (out of 2 points)

Score: 1 point

后向碰撞预警 Rear Collision Warning



0.5/0.5分(0.5 points)

后方交通穿行提示 Rear Cross Traffic Alarm



0.5/0.5分(0.5 points)

DOW后排独立报警 DOW Rear-Row Independent Alarm



0/1分(0 points)

搭载
Configured

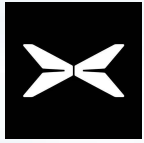


需选装
Optional



未搭载
Not configured





小鹏 G6 2023款
580长续航 Max

泊车能力
Parking Capability

23.4分 (满分27分)
23.4 points (out of 27 points)

新功能
New Function

1.5分 (满分2分)
1.5 points (out of 2 points)

用户手册审查
Review of User Manual

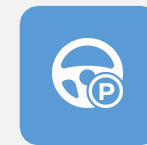
1分 (满分1分)
1 point (out of 1 point)

智能泊车总得分

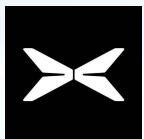
Total Score of Intelligent Parking

25.9分/86%

25.9 points/86%



G 优秀 A 良好 M 一般 P 较差
G Good A Acceptable M Marginal P Poor



小鹏 G6 2023款

580长续航 Max

智能泊车

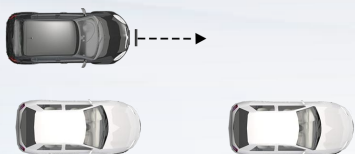
Intelligent Parking



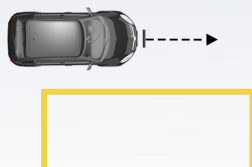
泊车能力
Parking Capability

(满分27分) (out of 27 points)

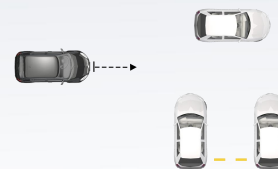
得分: 23.4分 Score:23.4 points



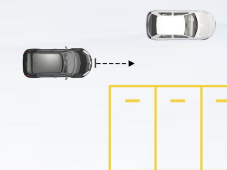
双边界车辆平行车位
Parallel Parking Space with Two
Bordering Vehicles
得分: 5.4分 (满分6分)
Score:5.4 points (out of 6 points)



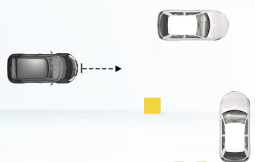
白色标线平行车位
Parallel Parking Space with
White Markings
得分: 3分 (满分3分)
Score:3 points (out of 3 points)



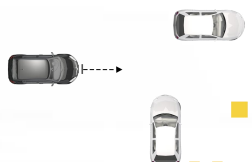
双边界车辆垂直车位
Vertical Parking Space with Two
Bordering Vehicles
得分: 4.8分 (满分6分)
Score:4.8 points (out of 6 points)



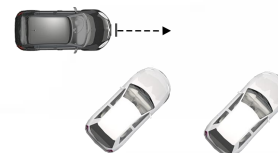
白色标线垂直车位
Vertical Parking Space with White
Markings
得分: 3分 (满分3分)
Score:3 points (out of 3 points)



方柱垂直车位-左方柱
Column-Defined Vertical Parking
Space - Left Column
得分: 1.8分 (满分3分)
Score:1.8 points (out of 3 points)



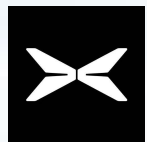
方柱垂直车位-右方柱
Column-Defined Vertical
Parking Space - Right Column
得分: 2.4分 (满分3分)
Score:2.4 points (out of 3 points)



双边界车辆斜向车位
Skew Parking Space with Two
Bordering Vehicles
得分: 2分 (满分2分)
Score:2 points (out of 2 points)



白色标线斜向车位
Skew Parking Space with White
Markings
得分: 1分 (满分1分)
Score:1 point (out of 1 point)



小鹏 G6 2023款

580长续航 Max

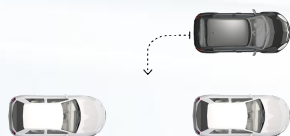
智能泊车

Intelligent Parking

新功能 New Function

(满分2分)
(out of 2 points)

得分: 1.5分
Score:1.5 points



平行车位远程操控泊入泊出

Remotely Controlled Parking-in and Parking-out in Parallel Parking Space

得分: 0.5分 (满分1分)

Score:0.5 points (out of 1 point)



垂直车位远程操控泊入泊出

Remotely Controlled Parking-in and Parking-out in Vertical Parking Space

得分: 1分 (满分1分)

Score:1 point (out of 1 point)

用户手册审查

Review of User Manual

(满分1分)
(out of 1 point)

得分: 1分

Score:1 point

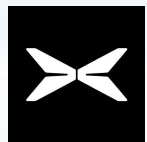
系统定义 System Definition	●	0.25/0.25分(0.25 points)
驾驶员责任 Driver Responsibility	●	0.25/0.25分(0.25 points)
系统使用条件 System Service Conditions	●	0.25/0.25分(0.25 points)
系统局限性 System Limitation	●	0.25/0.25分(0.25 points)

明确
Defined



未明确
Undefined





小鹏 G6 2023款

580长续航 Max

语音交互

Voice Interaction

17分 (满分19分)

17 points (out of 19 points)

触屏交互

Touch Screen Interaction

12.25分 (满分15分)

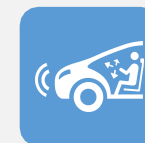
12.25 points (out of 15 points)

智能交互总得分

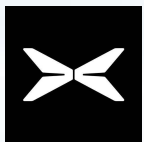
Total Score of Intelligent Interaction

29.25分/86%

29.25 points/86%



G 优秀 A 良好 M 一般 P 较差
G Good A Acceptable M Marginal P Poor



小鹏 G6 2023款

580长续航 Max

智能交互

Intelligent Interaction



语音交互
Voice Interaction

(满分19分) (out of 19 points)

得分: 17分 Score:17 points



触屏交互
Touch Screen Interaction

(满分15分) (out of 15 points)

得分: 12.25分 Score:12.25 points

唤醒
Wake-up



4/4分 (4 points)

功能满足度

Functional Satisfaction



9/10分 (9 points)

功能丰富度

Functional Richness



4/4分 (4 points)

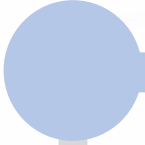
方言支持度

Dialect Support



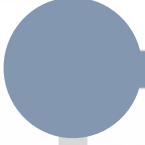
0/1分 (0 points)

可用度
Availability



2/2.5分 (2 points)

丰富度
Richness



2.5/2.5分 (2.5 points)

应用启动时间

Application Startup Time

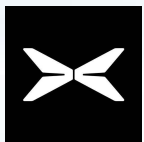


3.75/6分 (3.75 points)

流畅度
Fluency



4/4分 (4 points)



小鹏 G6 2023款

580长续航 Max

工况适应性

Condition Adaptability

39.81分 (满分50分)

39.81 points (out of 50 points)

环境适应性

Environmental Adaptability

27.99分 (满分30分)

27.99 points (out of 30 points)

充电效能

Charging Efficiency

20分 (满分20分)

20 points (out of 20 points)

智能能效总得分

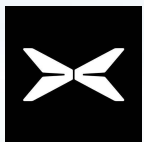
Total Score of Intelligent Energy Efficiency

87.80分/100分

87.80 points/100 points



G 优秀 A 良好 M 一般 P 较差
G Good A Acceptable M Marginal P Poor



小鹏 G6 2023款

580长续航 Max

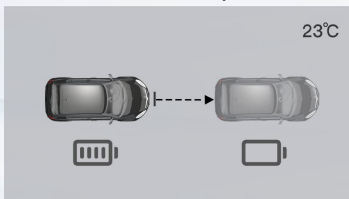
工况适应性

(满分50分)

Condition Adaptability
(out of 50 points)

得分: 39.81分

Score:39.81 points

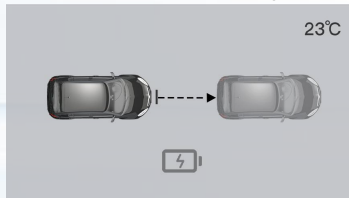


常温WLTC续航里程衰减

Driving Range Attenuation Rate under Normal-Temperature WLTC Condition

(满分30分) (out of 30 points)

得分: 20.48分 Score:20.48 points



常温WLTC能量消耗率

Energy Consumption Rate under Normal-Temperature WLTC Condition

(满分20分) (out of 20 points)

得分: 19.33分 Score:19.33 points

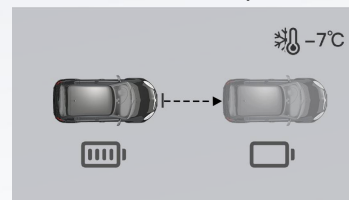
环境适应性

(满分30分)

Environmental Adaptability
(out of 30 points)

得分: 27.99分

Score:27.99 points

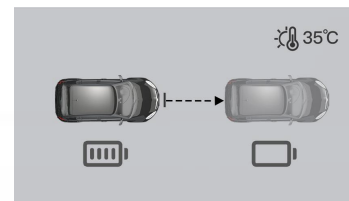


低温WLTC续航里程衰减

Driving Range Attenuation Rate under Low-Temperature WLTC Condition

(满分20分) (out of 20 points)

得分: 17.99分 Score:17.99 points



高温WLTC续航里程衰减

Driving Range Attenuation Rate under High-Temperature WLTC Condition

(满分10分) (out of 10 points)

得分: 10分 Score:10 points

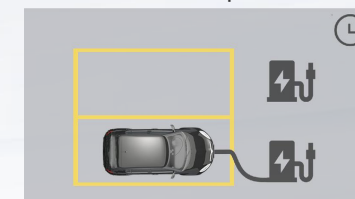
充电效能

(满分20分)

Charging Efficiency
(out of 20 points)

得分: 20分

Score:20 points



百公里充电时间

100 km Charging Time

(满分20分) (out of 20 points)

得分: 20分 Score:20 points

智能能效

Intelligent Energy Efficiency



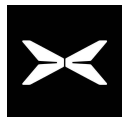
中国智能汽车指数 导航智能驾驶 (NP) 测评结果

China Intelligent Vehicle Index

Navigation Pilot (NP) Rating Results

(2023年第五批)

(Batch 5 in 2023)



小鹏 G6 2023款

580长续航 Max



车辆类型

Vehicle Type

纯电动多用途乘用车

整车型号

Vehicle Model

NHQ6480BEVFA

生产厂家

Manufacturer

肇庆小鹏新能源投资有限公司

制造年月

Manufacture Date

2023-10

NP功能名称

NP Function Name

高速导航辅助驾驶HNGP

NP软件版本

NP Software Version

Xmart OS 4.5.0

车辆识别代号

VIN

L1NNSGHA4PB027765

传感器及算力配置

Sensor and Computation Configuration

类型

Type

数量/性能

Qty/
Performance

摄像头

Camera

12个

毫米波雷达

Millimeter-Wave Radar

5个

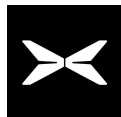
激光雷达

Laser Radar

2个

智能驾驶芯片 508TOPS

Intelligent Driving Chip



小鹏 G6 2023款

580长续航 Max



导航智能驾驶测评 (高速公路)

Navigation Pilot Evaluation
(Expressway)

智能行车
Intelligent Driving

G+

81.61分
(81.61 points)

车辆安全性得分: 81.61分/100分

Score of Vehicle Safety:81.61/100

功能完成度得分: 95.00分/100分

Score of Functional Completion:95.00/100

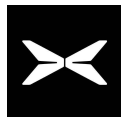
最终得分=min{车辆安全性得分, 功能完成度得分}=81.61分

Final Score= min {Score of Vehicle Safety Score and Score of Functional Completion} = 81.61 points

注: G+代表极优秀水平, 满分100分

Note: G+ = extremely excellent, with a full score of 100 points.

G+ 极优秀 G 优秀 A 良好 M 一般 P 较差
G+ Very Good G Good A Acceptable M Marginal P Poor



小鹏 G6 2023款

580长续航 Max

前车静止 (直道)

Forward Vehicle Being
Stationary (on a Straight Lane)

13.07分 (满分14分)

13.07 points (out of 14 points)

前车静止 (直道)

- 目标车偏置

Forward Vehicle Being
Stationary (on a Straight Lane) -
TV Being Offset

13.07分 (满分14分)

13.07 points (out of 14 points)

前车静止 (直道)

- 目标车斜置

Forward Vehicle Being
Stationary (on a Straight Lane) -
TV Being Skewed

13.07分 (满分14分)

13.07 points (out of 14 points)

前车静止 (弯道)

Forward Vehicle Being
Stationary (on a Curved Lane)

13.07分 (满分14分)

13.07 points (out of 14 points)

前车切入

Forward Vehicle Cutting in

9.33分 (满分14分)

9.33 points (out of 14 points)

前车切出

Forward Vehicle Cutting out

9.00分 (满分15分)

9.00 points (out of 15 points)

交通锥避让

Avoidance of Traffic Cones

11.00分 (满分15分)

11.00 points (out of 15 points)

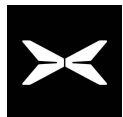
车辆安全性测试 Vehicle Safety Test

(满分100分)

得分: 81.61分

(out of 100 points)

Score:81.61 points



小鹏 G6 2023款

580长续航 Max

车辆安全性测试 Vehicle Safety Test

(满分100分)

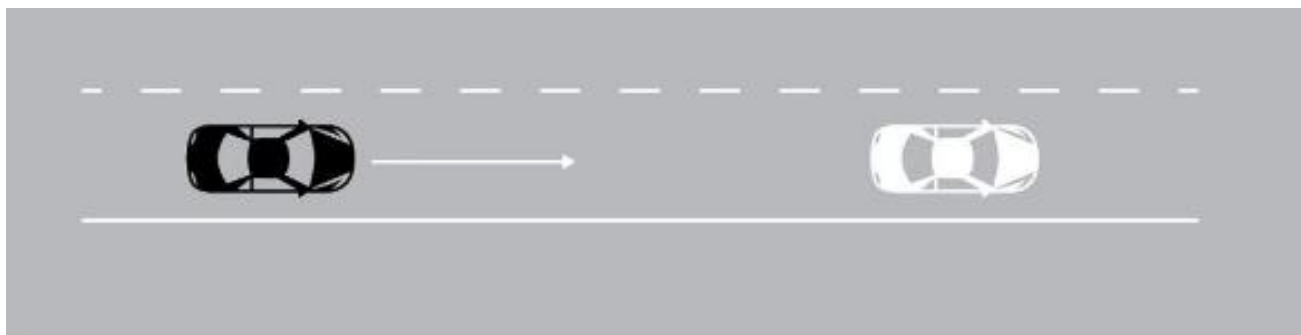
得分: 81.61分

(out of 100 points)

Score:81.61 points

① 前车静止 (直道)

Forward Vehicle Being Stationary (on a Straight Lane)



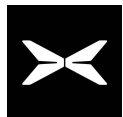
得分 Score	满分 Full Score
13.07分 13.07 points	14分 14 points

② 前车静止 (直道) - 目标车偏置

Forward Vehicle Being Stationary (on a Straight Lane) - TV Being Offset



得分 Score	满分 Full Score
13.07分 13.07 points	14分 14 points



小鹏 G6 2023款

580长续航 Max

车辆安全性测试

Vehicle Safety Test

(满分100分)

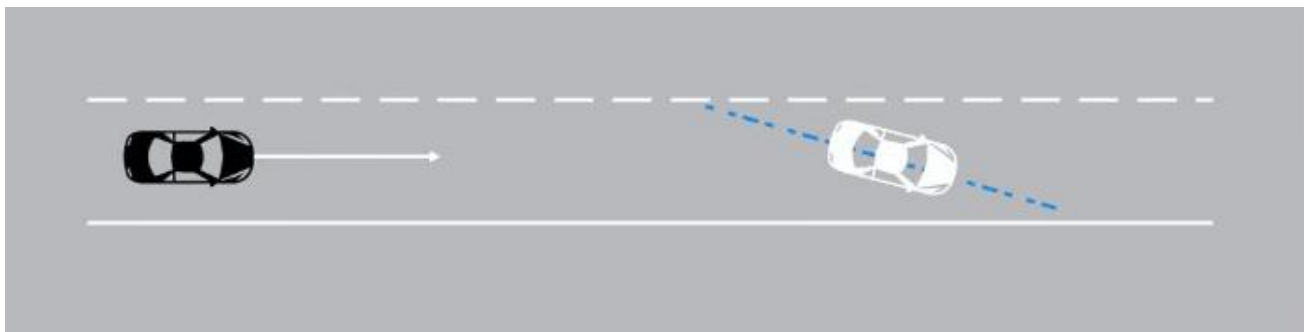
得分: 81.61分

(out of 100 points)

Score:81.61 points

③ 前车静止 (直道) - 目标车斜置

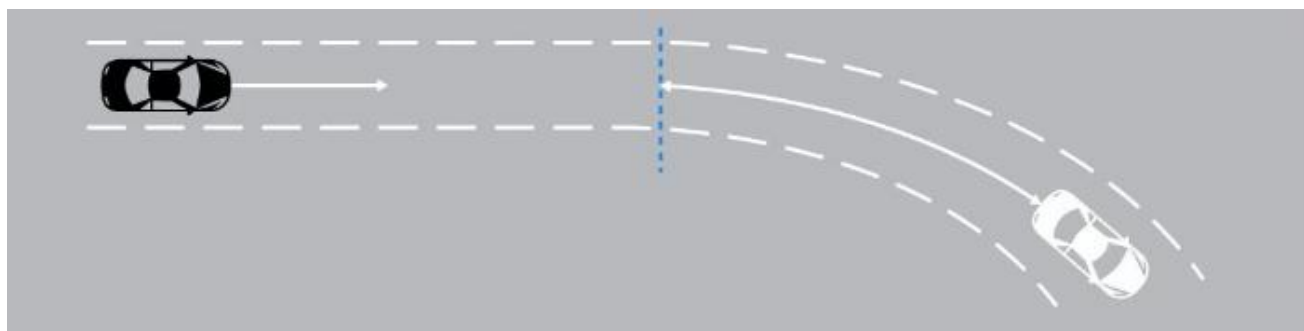
Forward Vehicle Being Stationary (on a Straight Lane) - TV Being Skewed



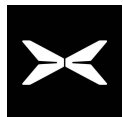
得分 Score	满分 Full Score
13.07分 13.07 points	14分 14 points

④ 前车静止 (弯道)

Forward Vehicle Being Stationary (on a Curved Lane)



得分 Score	满分 Full Score
13.07分 13.07 points	14分 14 points



小鹏 G6 2023款

580长续航 Max

车辆安全性测试

Vehicle Safety Test

(满分100分)

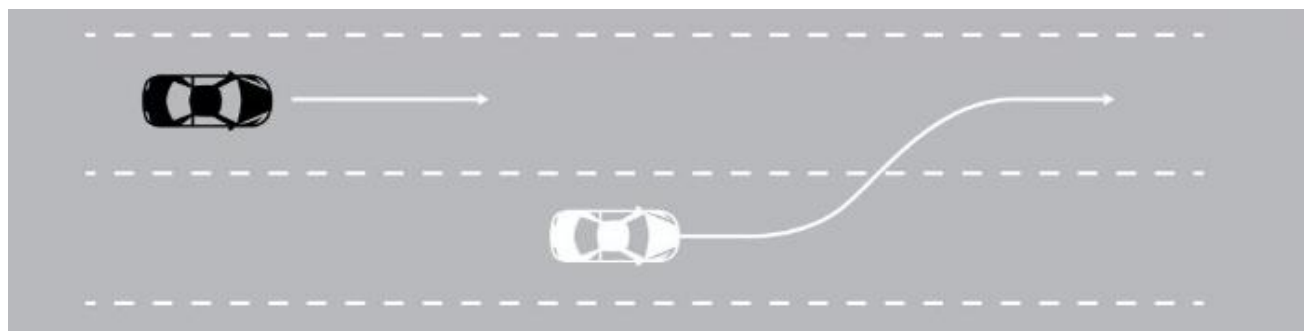
得分: 81.61分

(out of 100 points)

Score:81.61 points

⑤ 前车切入

Forward Vehicle Cutting in



得分
Score

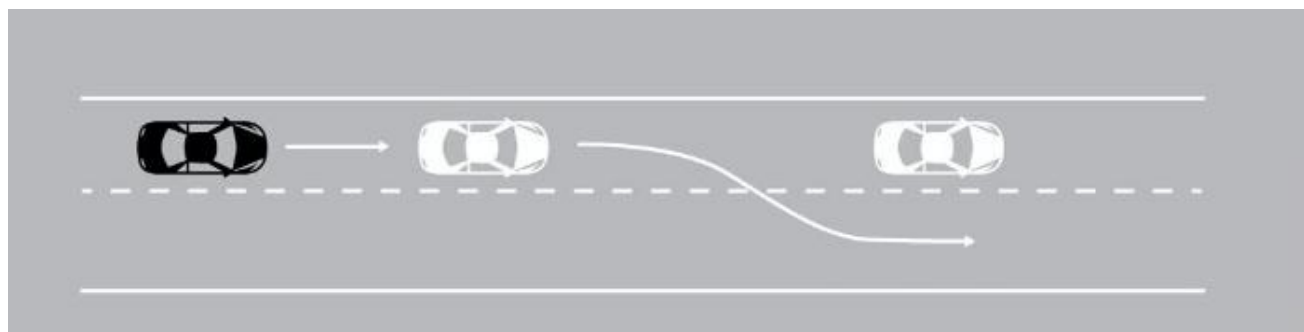
9.33分
9.33 points

满分
Full Score

14分
14 points

⑥ 前车切出

Forward Vehicle Cutting out



得分
Score

9.00分
9.00 points

满分
Full Score

15分
15 points

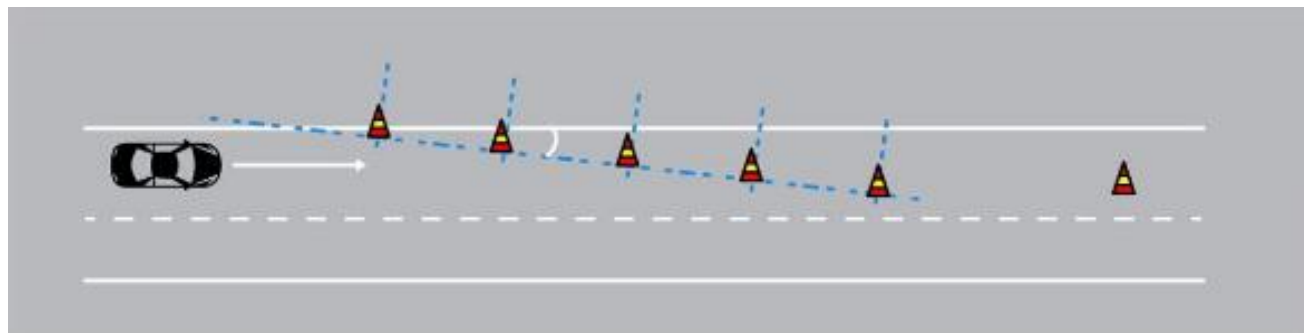


小鹏 G6 2023款

580长续航 Max

⑦ 交通锥避让

Avoidance of Traffic Cones



车辆安全性测试

Vehicle Safety Test

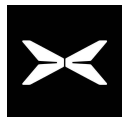
(满分100分)

得分: 81.61分

(out of 100 points)

Score:81.61 points

得分 Score	满分 Full Score
11.00分 11.00 points	15分 15 points



小鹏 G6 2023款

580长续航 Max

拥堵走停

Stop-and-Go Traffic

5.00分 (满分5分)

5.00 points (out of 5 points)

隧道通行

Tunnel Passing

5.00分 (满分5分)

5.00 points (out of 5 points)

车道尽头导航
变道

Navigation for Lane Change
at a Lane End

30.00分 (满分30分)

30.00 points (out of 30 points)

高速汇出匝道

Expressway Exit Ramp

25.00分 (满分25分)

25.00 points (out of 25 points)

匝道内路线选择

Route Selection in Ramp

10.00分 (满分10分)

10.00 points (out of 10 points)

匝道汇入高速

Ramp Entrance Expressway

25.00分 (满分25分)

25.00 points (out of 25 points)

额外罚分

Additional Penalty Points

10.00分

10.00 points

额外加分

Additional bonus points

5.00分

5.00 points

功能完成度测试
Functional Completion
Test

(满分100分)

得分: 95.00分

(out of 100 points)

Score:95.00 points



小鹏 G6 2023款

580长续航 Max

功能完成度测试 Functional Completion Test

(满分100分)

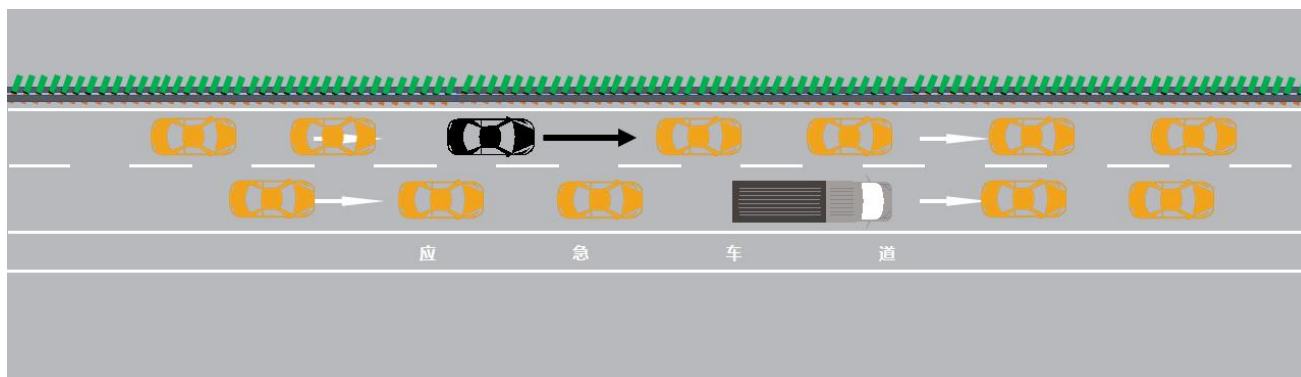
得分: 95.00分

(out of 100 points)

Score:95.00 points

① 拥堵走停

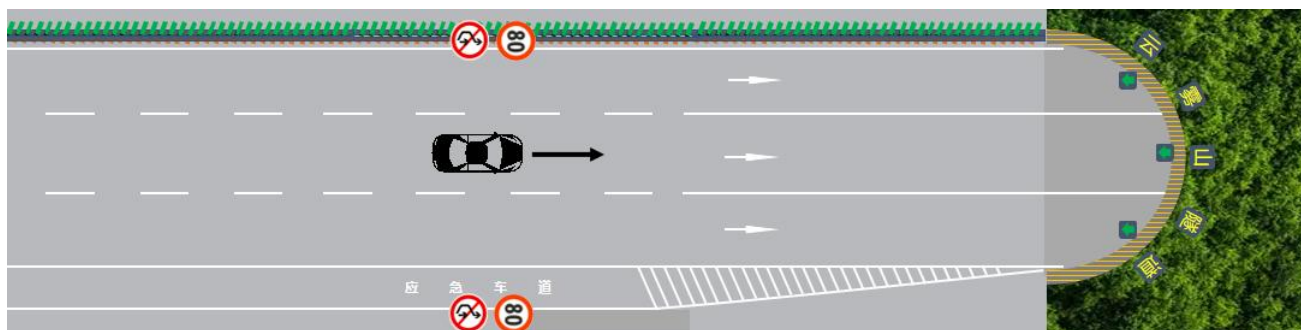
Stop-and-Go Traffic



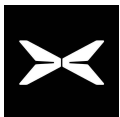
得分 Score	满分 Full Score
5.00分 5.00 points	5分 5 points

② 隧道通行

Tunnel Passing



得分 Score	满分 Full Score
5.00分 5.00 points	5分 5 points



小鹏 G6 2023款

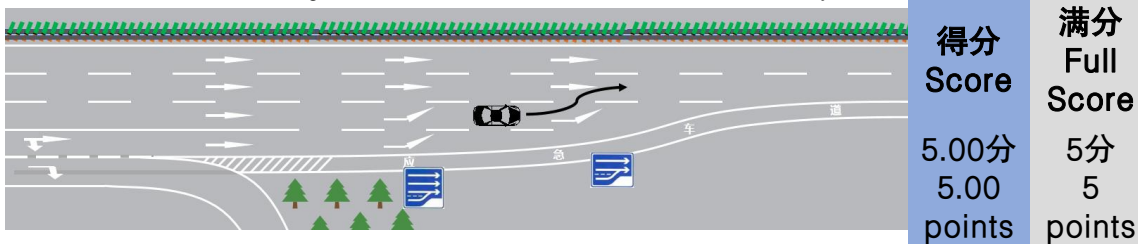
580长续航 Max

③ 车道尽头导航变道

Navigation for Lane Change at a Lane End

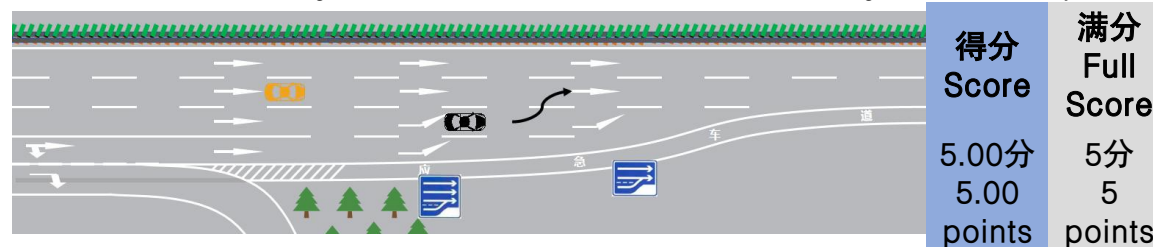
工况1: 主车车道前方及相邻车道无环境车

Condition 1: no surrounding vehicle in front of the SV's lane and in the adjacent lane



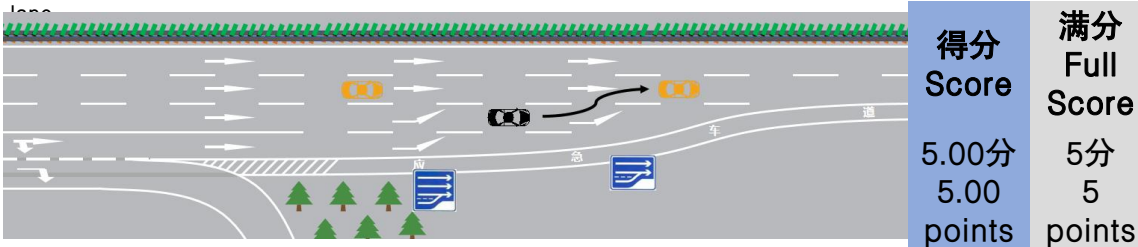
工况2: 主车车道前方无环境车, 相邻车道有 1 辆环境车

Condition 2: no surrounding vehicle in front of the SV's lane and 1 surrounding vehicle in the adjacent lane



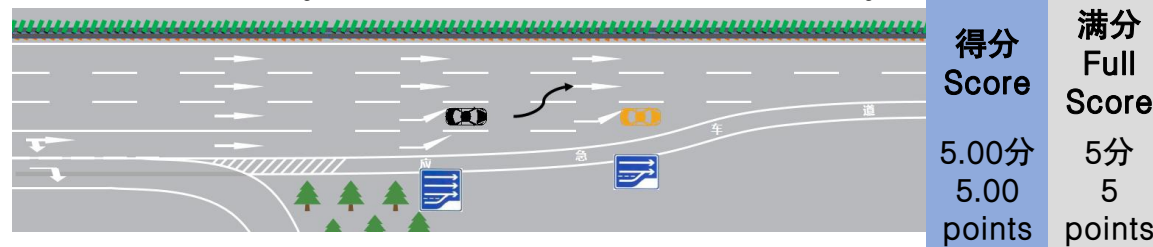
工况3: 主车车道前方无环境车, 相邻车道有 2 辆环境车

Condition 3: no surrounding vehicle in front of the SV's lane and 2 surrounding vehicles in the adjacent lane



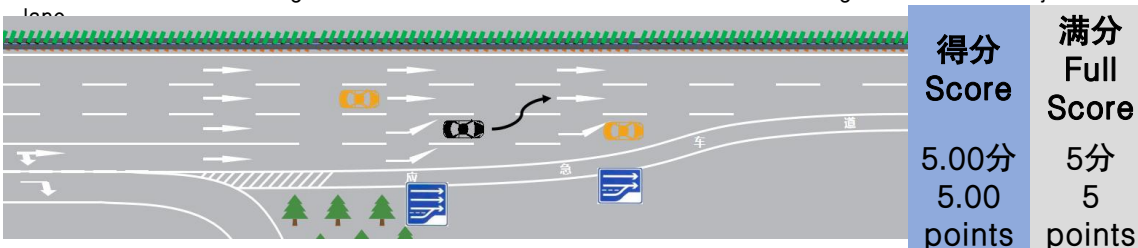
工况4: 主车车道前方有 1 辆环境车, 相邻车道无环境车

Condition 4: 1 surrounding vehicle in front of the SV's lane and no surrounding vehicle in the adjacent lane



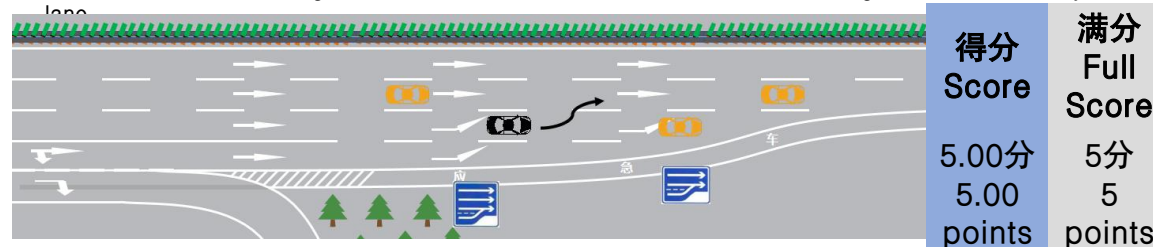
工况5: 主车车道前方有 1 辆环境车, 相邻车道有 1 辆环境车

Condition 5: 1 surrounding vehicle in front of the SV's lane and 1 surrounding vehicle in the adjacent lane



工况6: 主车车道前方有 1 辆环境车, 相邻车道有 2 辆环境车

Condition 6: 1 surrounding vehicle in front of the SV's lane and 2 surrounding vehicles in the adjacent lane



功能完成度测试
Functional Completion Test

(满分100分)
得分: 95.00分
(out of 100 points)
Score:95.00 points



小鹏 G6 2023款

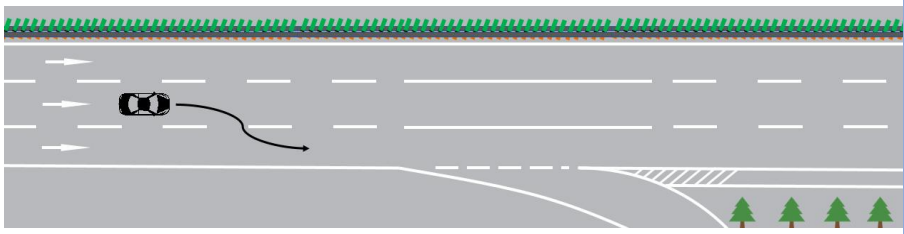
580长续航 Max

④ 高速汇出匝道

Expressway Exit Ramp

工况1: 主车车道前方及相邻车道无环境车

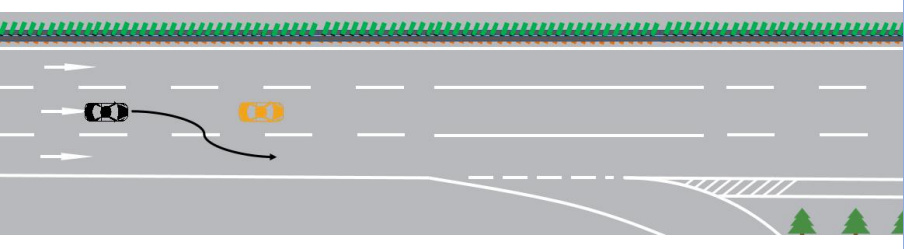
Condition 1: no surrounding vehicle in front of the SV's lane and in the adjacent lane



得分 Score	满分 Full Score
5.00分 5.00 points	5分 5 points

工况3: 主车车道前方有 1 辆环境车, 相邻车道无环境车

Condition 3: 1 surrounding vehicle in front of the SV's lane and no surrounding vehicle in the adjacent lane



得分 Score	满分 Full Score
5.00分 5.00 points	5分 5 points

工况5: 主车车道前方有 1 辆环境车, 相邻车道有 2 辆环境车

Condition 5: 1 surrounding vehicle in front of the SV's lane and 2 surrounding vehicles in the adjacent lane



得分 Score	满分 Full Score
5.00分 5.00 points	5分 5 points

功能完成度测试 Functional Completion Test

(满分100分)

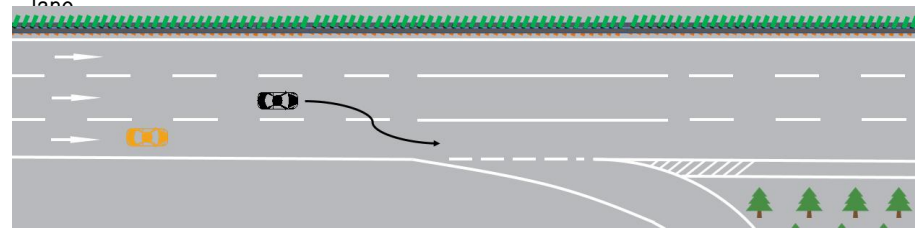
得分: 95.00分

(out of 100 points)

Score:95.00 points

工况2: 主车车道前方无环境车, 相邻车道有 1 辆环境车

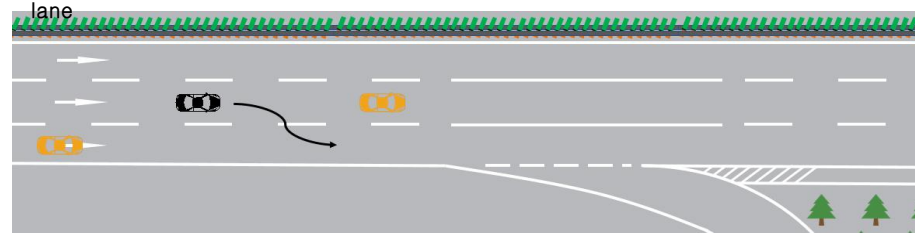
Condition 2: no surrounding vehicle in front of the SV's lane and 1 surrounding vehicle in the adjacent lane



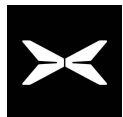
得分 Score	满分 Full Score
5.00分 5.00 points	5分 5 points

工况4: 主车车道前方有 1 辆环境车, 相邻车道有 1 辆环境车

Condition 4: 1 surrounding vehicle in front of the SV's lane and 1 surrounding vehicle in the adjacent lane



得分 Score	满分 Full Score
5.00分 5.00 points	5分 5 points



小鹏 G6 2023款

580长续航 Max

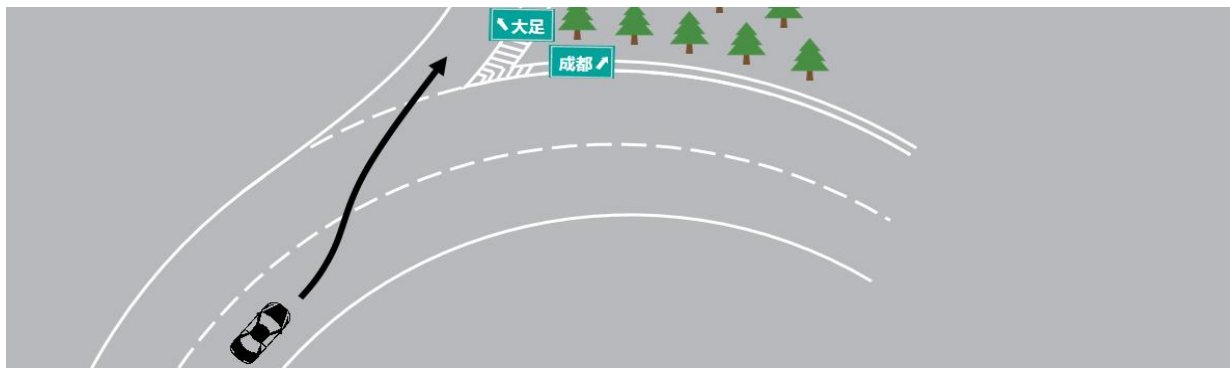
功能完成度测试
Functional Completion Test

(满分100分)
得分: 95.00分
(out of 100 points)
Score:95.00 points

⑤ 匝道内路线选择

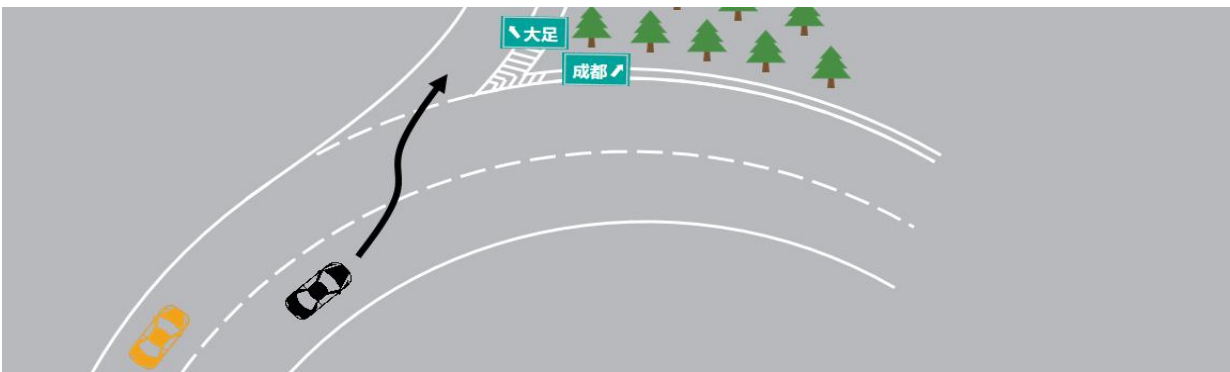
Route Selection in Ramp

工况1: 主车车道前方及相邻车道无环境车
Condition 1: no surrounding vehicle in front of the SV's lane and in the adjacent lane

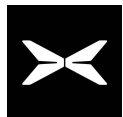


得分 Score	满分 Full Score
5.00分 5.00 points	5分 5 points

工况2: 主车车道前方无环境车, 相邻车道有 1 辆环境车
Condition 2: no surrounding vehicle in front of the SV's lane and 1 surrounding vehicle in the adjacent lane



得分 Score	满分 Full Score
5.00分 5.00 points	5分 5 points



小鹏 G6 2023款

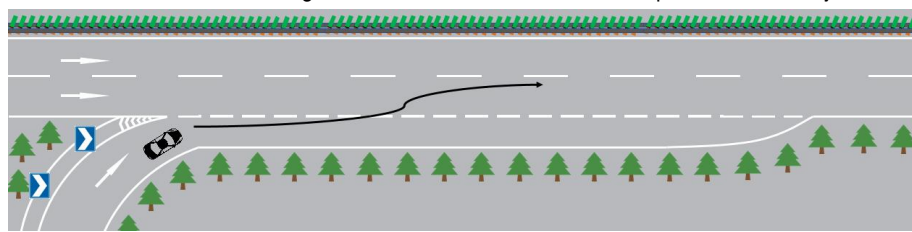
580长续航 Max

⑥ 匝道汇入高速

Ramp Entrance Expressway

工况1: 主车所在匝道前方及相邻车道无环境车


Condition 1: no surrounding vehicle in front of the SV's ramp and in the adjacent lane



得分 Score	满分 Full Score
5.00分 5.00 points	5分 5 points

工况3: 主车所在匝道前方有 1 辆环境车, 相邻车道无环境车

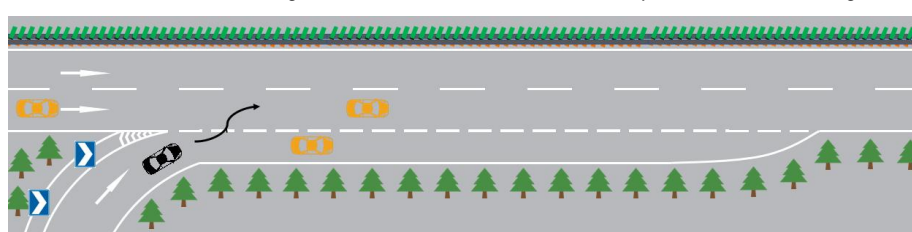
Condition 3: 1 surrounding vehicle in front of the SV's ramp and no surrounding vehicle in the adjacent lane



得分 Score	满分 Full Score
5.00分 5.00 points	5分 5 points

工况5: 主车所在匝道前方有 1 辆环境车, 相邻车道有 2 辆环境车

Condition 5: 1 surrounding vehicle in front of the SV's ramp and 2 surrounding vehicle in the adjacent lane



得分 Score	满分 Full Score
5.00分 5.00 points	5分 5 points

功能完成度测试 Functional Completion Test

(满分100分)

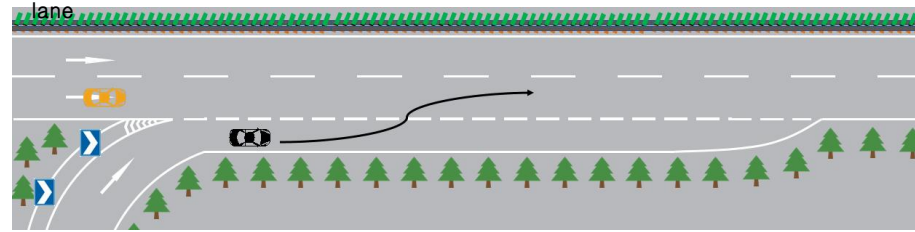
得分: 95.00分

(out of 100 points)

Score:95.00 points

工况2: 主车所在匝道前方无环境车, 相邻车道有 1 辆环境车

Condition 2: no surrounding vehicle in front of the SV's ramp and 1 surrounding vehicle in the adjacent lane



得分 Score	满分 Full Score
5.00分 5.00 points	5分 5 points

工况4: 主车所在匝道前方有 1 辆环境车, 相邻车道有 1 辆环境车

Condition 4: 1 surrounding vehicle in front of the SV's ramp and 1 surrounding vehicle in the adjacent lane



得分 Score	满分 Full Score
5.00分 5.00 points	5分 5 points



小鹏 G6 2023款

580长续航 Max

功能完成度测试

Functional Completion Test

(满分100分)

得分: 95.00分

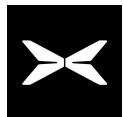
(out of 100 points)

Score:95.00 points

⑦ 额外罚分

Additional Penalty Points

扣分项 Deduction Item		实扣分 Actual Deduction
路段内 In a section	超过道路限速 Beyond the road speed limit	0
	变道不打转向灯 Lane change without turning on the turn signal	10.00
	压实线 Crossing a solid line	0
	感知系统误识别导致意料之外的制动或转向 Unintended braking or steering caused by misidentification of the sensing system	0
匝道内 In ramp	压实线 Crossing a solid line	0
	感知系统误识别导致意料之外的制动或转向 Unintended braking or steering caused by misidentification of the sensing system	0
NP功能ODD适应性 ODD adaptability of NP function	在主车ODD支持路段, NP功能无法正常激活, 适应性差, 影响驾驶员体验 In the ODD-supported section of the TV, the NP function cannot be activated normally and is not well adapted, affecting the driver's experience	0



小鹏 G6 2023款

580长续航 Max

功能完成度测试 Functional Completion Test

(满分100分)

得分: 95.00分

(out of 100 points)

Score:95.00 points

⑧ 额外加分

Additional bonus points

加分项 Bonus Item	实加分 Actual Bonus
前方慢行车辆自主变道 Autonomous lane change due to the forward slow-moving vehicle	2.00
智慧避让侧方大型车辆 Intelligently avoid lateral heavy-duty vehicles	0
主车回避并行相邻车道环境车 SV avoidance of parallel surrounding vehicles in adjacent lanes	3.00



•安全护航 智慧出行

• Guard by Safety, Travel with Intelligence